

MONTROSE-VERDUGO CITY City Guide

2018 Edition



*Finding Solutions for your Real Estate needs:
Residential, Multi-family,
Trust & Estate Sales, Senior Relocation*

JANA ACE WUNDERLICH

REALTOR® , CRS, GRI, ABR, SRES, EcoBroker



JANAACEWUNDERLICH.COM

Cell 818.472.3131 Office 818.583.1208

AceTheRealtor@gmail.com

CalBRE #01438712



Building a foundation for your family!

846 Foothill Boulevard | La Cañada Flintridge 91011

Montrose-Verdugo City Chamber of Commerce

2424 Honolulu Ave
Montrose, CA 91020
(818) 249-7171
www.montrosechamber.org

2017-2018 Board of Directors

Officers: President

Julie Ann Martin

CEO George Pondella Past President Eric Hamilton

Internal Affairs Dave Fink Treasurer Mark McNelis

Directors:

Director Eric Bettelli Director Chris Charles

Director Rick Dinger Director Linda Jungle

Director Stephanie Van Sickle

Staff: Executive Director Melinda Clarke

Member Services Victoria Marie Malone

3Message from the President
4 About the Chamber
8 History of Montrose, California
10 Important Phone Numbers
12 Chamber Member Listing
26 Shopping
30 Education
31 Organizations, Clubs, and Assoc.
32 Government
55 Area Information
56 Calendar of Events

Produced and Published by: Liberty Marketing Company
204 N West Street
Arlington, Texas 76011
PH: 800.954.MAPS
Fax: 817.860-7113
LibertyMapAds.com



NOTES: Photos and area information was provided by the Montrose-Verdugo City Chamber of Commerce. Used with permission. Trivia box information was used from wikipedia.com and other sources. All rights reserved.

Your source for all things local!



**2424 Honolulu Ave
Montrose, CA 91020**

Phone: (818) 249-7171
Fax: (818) 249-8919
mvcc@montrosechamber.org
www.montrosechamber.org

Like us on
Facebook! 
[@MontroseChamber](https://www.facebook.com/MontroseChamber)





Welcome to the Montrose area!

Our Chamber is *YOUR* Source for all things Local.

by Julie Ann Martin, President Montrose-Verdugo City Chamber of Commerce

My name is Julie Ann Martin. I am honored to have been your 2017 Chamber of Commerce President.

I have lived in the Montrose area for the over 50 years! Can you tell I love this town? I'm so excited to lead the Board of Directors and to play such a big part in this community. I am a full time Realtor with Dilbeck Real Estate, a full time mom to a teenage son and I love spending time with my family and friends. I feel lucky to be in this quaint town surrounded by these beautiful Foothill and Verdugo mountains. Living here so long I have experience and see myself as an authority with the real estate market here in Montrose.

My vision for the year is Presence. I am a believer that a strong presence is essential when joining together in a small community. We as a chamber work together as a team to bring in new ideas, fun events, networking and business to our local shops and restaurants.

Social media is one of our newest ways to engage with the community and to bring additional value to our chamber members. Providing unique events, business mixers and introducing new

trends is just the beginning of what we can do in our Chamber of Commerce. Participation on all parts will bring everyone closer and the ability to help one another.

I want to bring value to you as a member. Your thoughts and ideas are always welcome. We have an open door policy here. Questions or concerns can come up anytime and we are here to help. Promoting businesses is just one way we are able to help others succeed, highlight what you have to offer and bring you more business.

Please feel free to stop by the Chamber offices to visit if you are in the neighborhood. You can also e-mail me at julieannrealestate@gmail.com.

*Sincerely,
Julie Ann Martin,
President
Montrose-Verdugo City
Chamber of Commerce*

Call Julie Ann Martin, Montrose-Verdugo City Chamber, President at (818) 249-7171 to inquire about your new business in the Montrose-Verdugo City area. ❖



Montrose-Verdugo City Chamber of Commerce... Helping Your Business Flourish Since 1923

Since 1923, the Montrose-Verdugo City Chamber of Commerce’s first goal has always been the same... to join the businesses and the community together to create a vital economy and climate for all. Members of the Montrose-Verdugo City Chamber of Commerce enjoy benefits and services unique to Chamber membership.

MISSION STATEMENT

Montrose-Verdugo City Chamber of Commerce: *Your source for all things local!* Our mission is to actively support and enrich the community, vitality and pride of Montrose, to help preserve the historic district and small town atmosphere, to promote economic stability and positive, productive relationships within Montrose and the surrounding communities.

ADVOCATE FOR BUSINESSES

- Business and Community Representation within Glendale City Hall
- Support business interests within Glendale/Montrose and the Foothills Area
- Frequent communications with City of Glendale Officials

- Assistance with city permit issues
- City updates concerning businesses
- Express concerns to Council members

PROMOTION OPPORTUNITIES FOR YOUR BUSINESS

- Event Sponsorships (starting at \$250*)
- Publicized grand openings/ribbon cutting for new members
- Business Referrals
- Free Web & Directory Text Listings for members
- Discounted ad space in printed directory for members
- Community Credibility
- Networking Opportunities at monthly mixers hosted at local businesses
- Hosting mixers to showcase your business to businesses and residents
- Advertising in the chamber’s electronic newsletter for a nominal fee

GIVING BACK TO THE COMMUNITY THAT SUPPORTS YOUR BUSINESS

We Strive To Enrich The Local Community & Surrounding Areas

- Annual MVCCC Scholarships to local graduating seniors
- Support & participation to nearly a dozen local charities & organizations
- Generous annual food donations to The Salvation Army, CVHS & Prom Plus

- City of Glendale candidate forums during elections
- Memorial Day Ceremony
- "Oktoberfest! (LARGEST event in the city of Glendale & the Foothills)
- Support for the local art community
- Volunteer opportunities for teens & seniors
- Resource for businesses, residents and students
- Community Mixers hosted at local businesses
- Relevant email updates
- Community Resource
- Business Referrals

RESIDENTIAL MEMBERSHIPS

- Stay on top of local issues, events and specials offers from businesses
- Invites to community mixers, community award dinner, & other events
- Notification of volunteer opportunities for high school students
- Liaison to the City of Glendale to express your neighborhood concerns
- Community Resource

*The Office hours are
Monday- Friday, 9 a.m. – 3 p.m.*

*For information on Chamber
Membership, call (818) 249-7171. ❖*

Past Presidents

2017 Julie Ann Martin
 2016 George Pondella
 2015 Eric Hamilton
 2014 Pat Longo
 2013 Pat Longo
 2012 Scott Trulik
 2011 Scott Trulik
 2010 Mike Perry
 2009 Jane Kane
 2008 Stuart Perlitsh
 2007 Bea Blessley
 2006 Laurie Jo Phillips
 2005 Michael Shaar
 2004 Mercy Velazquez
 2003 James Bates
 2002 Stephanie Mines
 2001 Kate Bernier
 2000 Chris Waldheim
 1999 Rick Dinger
 1998 Ken Grayson
 1997 Charles B. Andrew
 1996 Jodie Kendall
 1995 Barry Shanley
 1994 Barry Shanley
 1993 Hal Jewell
 1992 Myrna Grijalva
 1991 Bob Torres
 1990 Don Ruygrok
 1989 Bill Phillips
 1988 Marta Laughlin
 1987 Corey Hill

1986 Chuck Reever
 1985 Mary Heberle
 1984 Frank Roberts
 1983 Sue Potter Shanley
 1982 Phil Cole
 1981 Jeanne Howard
 1980 Evelyn Riggins
 1979 Faye Snow
 1978 Gordon Kemble
 1977 James A. Larson
 1976 Arthur G. McGreal
 1975 Frank Trask
 1974 Rodney DeCristofaro
 1973 John Hennessey
 1972 Doug Clark
 1971 Hal Newman
 1970 Eugene Potter
 1969 Byrdie Compton
 1968 Norm Avril
 1967 Robert Cooke
 1966 Russ Ranzona
 1965 John Gregory
 1964 James McClain
 1963 Hal Covert
 1962 Zachary Campos
 1961 Edmund Flowers
 1960 James Stottlemeyer
 1959 Raiford Dorsey
 1958 Raiford Dorsey
 1957 Paul Coffman
 1956 Leonard Wurtz

1955 Don Carpenter
 1954 Walt Avril
 1953 Hugo Ebmyer
 1952 Gordon Kurtz
 1951 Donald E. Heller
 1950 Roy Bowman
 1949 Glen Asquith
 1948 Lester Schwaiger
 1947 Wm. Crippin, Sr.
 1946 Don Paget
 1945 Errol Gray
 1944 Floyd Peet
 1943 George Gilbert
 1942 J. William Slater
 1941 Tom Jeffers
 1940 Tom Jeffers
 1939 Haken Berg
 1938 Haken Berg
 1937 Haken Berg
 1936 Haken Berg
 1935 Haken Berg
 1934 George Thomas
 1933 J. William Slater
 1932 Dr. Johns
 1931 J. William Slater
 1930 Judge C. Dyer
 1929 Dr. Johns
 1928 Albert Sullivan
 1927 C. J. Reinhard
 1926 C. L. Mead
 1925 A. W. Clark



What We Do

The Chamber sponsors events throughout the year to bring the businesses and the community together in an effort to increase the visibility of the area and your business. The Chamber sponsors the Montrose Food and Brewfest, the annual Oktoberfest, and co-sponsors the annual Christmas Parade with the City of Glendale and the Montrose Shopping Park Association. These events offer members the opportunity to sponsor programs for local youth groups and promote their businesses through cooperative advertising. Chamber programs are designed to help your business become more effective in the use of time and money.

Networking Opportunities & Referral Services

The Chamber office functions as a public relations firm and referral service for its members. The Brochure Wall displays members' business cards, catalogs, and promotional material for the public. Our Mixers offer opportunities for members to showcase their place of business. Through legislative meetings, educational sponsorships and community forums members can make business as well as political contacts allowing them to become part of an ongoing network where information and ideas are exchanged.

Advertising & Business Promotion

New business members are presented a wall plaque at our Mixers and complementary membership mailing labels. New members are also encouraged to hold Ribbon Cuttings and Grand Openings which are featured in the local newspapers. Other advertising opportunities include our newsletter, Business Connection, our Business Directory and Shoppers Guide, and the Tri-Chamber Foothills Community Business Expo.

Special Benefits

Montrose-Verdugo City Chamber of Commerce is a member of the California Chamber of Commerce. This assures a constant source of information regarding promotional ideas, and legislative guides all available through the Chamber office.

Invest in Your Future

Could you in your business provide a wide variety of socio-economic services for yourself, for the community and your fellow business people? Probably not. But as a member of the Montrose-Verdugo City Chamber of Commerce you can! Your Chamber dues are NOT just another donation. Your Chamber of Commerce IS a return on your investment. Your Chamber of Commerce membership is A Sound Business Investment! Join the Chamber Team today and become involved.

Call our office for more information on how to become a chamber member or visit us online at www.montrosechamber.org.

Montrose-Verdugo City Chamber of Commerce

2424 Honolulu Ave

Montrose, CA 91020

Phone: (818) 249-7171

Fax: (818) 249-8919

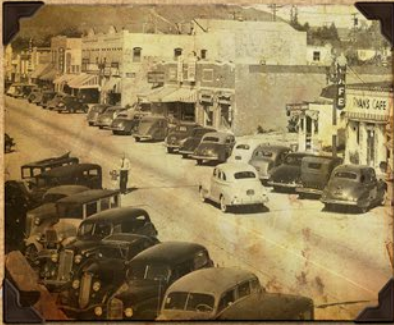
mvcc@montrosechamber.org

www.montrosechamber.org

**Scan the QR code to take you
directly to our membership page!**



History of Montrose, California



The tranquil community of Montrose is located in the beautiful Crescenta Valley, which is nestled in the foot Mountains, San Rafael Hills and the majestic San Gabriel Mountains. For decades, there have been stories told about the origins of Montrose that have turned out not to be true! When Robert Newcombe, our Local Historian, was researching his photo history book on Montrose, he discovered that he had been duped by these stories along with everyone else.

Some of the myths included: "Developers Holmes and Walton" built Montrose. Reality: Holmes sold his share of the company to Walton five years before Montrose opened. Robert Walton teamed up with an investor named J. Frank Walters to buy and grade the land.

Myth: Montrose was named after Montrose, Pennsylvania. **Reality:** Walton and Walters held a contest in late 1912 to name their new community. Eight people submitted the name Montrose, which was picked the winner by a panel of judges, one of whom was Lt. Governor Wallace, who was building a Scottish style castle nearby. From the eight submitters, one person was arbitrarily selected the winner. He happened to be from Pennsylvania (150 miles away from Montrose, PA), but Walton and Walters never publicly said why they chose Montrose. Since Wallace was of Scottish descent, it's most likely that the community was named after Montrose, Scotland. But no one knows for certain.

Myth: Montrose was laid out in the pattern of a "mountain rose." **Reality:** While the streets look remarkably like a flower, especially from the air, the truth is the streets were planned and laid out in that pattern months before the name was selected. None of Walton's marketing material mentioned a floral pattern, but they do say that the "circular pattern of boulevards give it a park-like effect." It's certainly possible that the pattern of the streets inspired people to submit the name Montrose; and it's possible that the judges made the same connection. (Related to this, Montrose means "pink mountain" in French, not "mountain rose." In Scottish, it's simply a family name.) In late 1910, real estate agent Robert A. Walton teamed up with capitalist J. Frank Walters to buy almost 300 acres of undeveloped scrub brush in the southeastern corner of La Crescenta. They built a water system and graded the land in an unusual pattern with curved streets. In December 1912 they held a contest to name their new town site and selected Montrose, though they never publicly explained the name choice. On February 22, 1913, Walton and Walters hosted a large barbecue and started selling lots in Montrose. The first commercial building was a one story retail space at the southwestern corner of Honolulu Avenue and Verdugo Road that opened in early 1914. (Today that building is home to the Benitoite Restaurant.)

(Continued on next page)

Walton and Walters also bought the Eagle Rock Trolley, renamed it the Glendale and Montrose Railway, and extended the line through Montrose to La Crescenta. Most of the people who moved to the Crescenta Valley in the early days came here for the clean, dry air, which made asthma sufferers breathe easier. Health sanitariums dotted the valley. Early growth in Montrose was slow going, but in the 1920s, Montrose expanded rapidly, with the opening of a pharmacy, a hotel, a theater, a bank, and many retail stores.

Many of the buildings in present day Montrose were constructed during the roaring 20s. The area just south of Montrose was mostly orchards and vineyards owned by William Sparr. When he saw what was happening north of Honolulu Avenue in the 1920s, he decided to rip out his fruit trees and grapevines and divide his land into residential lots. He named the new area "Sparr Heights." The Great Depression put the brakes on this growth and contributed to the demise of the Glendale and Montrose Railway, which closed in 1930. Montrose remained a quiet town for the next decade and a half, though a few large buildings were built on the south side of Honolulu Avenue, replacing the decaying lumber barns that had supplied house-framing materials during the 1920s. In the late 1940s, many men who had been stationed in southern California during World War II decided to stay, and the Crescenta Valley boomed once again.

The local mountains, however, could not supply enough water for the increasing population, and water rationing became a regular occurrence. Glendale, which had access to water from other sources, offered non-rationed water as an enticement to annex all of La Crescenta. When that measure was soundly defeated at the polls, Glendale offered annexation on a neighborhood by neighborhood basis, and parts of Montrose (including most, but not all, of the shopping park) were annexed by Glendale between 1951 and 1955. Glendale's enthusiasm was short-lived, however, as the popularity of suburban shopping malls devastated traditional business districts, including Montrose. Local politicians considered turning Honolulu Avenue into a truck route to alleviate traffic on Foothill. The local merchants, led in part by Frank "Mr. Montrose" Roberts, were determined to save Montrose, and, inspired by what was done in Grand Junction, Colorado, turned the business district into a "shopping park" in 1967 by adding curbouts, benches, decorative walls, and extensive landscaping. To make up for the loss of parking spaces, the city of Glendale bought properties behind the main buildings on Honolulu and created large parking lots.

Since then the Montrose Shopping Park Association and the Montrose Chamber of Commerce have sponsored regular events that draw thousands of visitors from all over southern California, such as the Arts and Crafts Fair, the Montrose Christmas Parade, and Oktoberfest, and the weekly Farmers Market. While Montrose has come a long way from its scrub brush start 100 years ago, its early buildings remind visitors of Main Street USA while the 1960s makeover comforts them with its park-like setting. ❖

Source: Montrose-Verdugo City Chamber of Commerce

Important Phone Numbers

CITY DIRECTORY

Animal Services(818) 240-9100
Arts & Cultural Commission(818) 548-2042
Beeline and Dial-A-Ride(818) 247-0691
Building & Safety (Permits)(818) 548-3200
Bulky Item Pickup(818) 548-3916
City Clerk(818) 548-2090
City Hall (General)(818) 548-4000
Community Development.....(818) 548-2140
Community Services & Parks.....(818) 548-2000
Engineering(818) 548-3921
Fire Department (Non-Emergency) ... (818) 548-4814
Graffiti Removal Hotline.....(818) 548-3726
Indigenous Tree Protection.....(818) 548-3950
Management Services(818) 548-4844
Neighborhood Services.....(818) 548-3700
Police Department (Non-Emergency)(818) 548-4840
Public Works Department.....(818) 548-3900
Senior Services.....(818) 548-3775
Street and Sidewalk Repair.....(818) 548-3950
Traffic Signal Repair(818) 548-3945
Trash Pickup.....(818) 548-3916
Tree Trimming.....(818) 548-4861

SENIOR INFORMATION

Glendale Parks & Recreation Senior Center
.....(818) 548-3775
Greater Glendale Council on Aging(818) 548-3775
Honolulu Manor(818) 541-1440
Kirkwood Assisted Living - Glendale .(818) 291-9220
Mountview Retirement Center(818) 248-6737
Sparr Heights Community Center(818) 548-2187
Twin Oaks Apartments(818) 957-7637
USC Verdugo Hills Hospital – Senior Health Center
.....(818) 952-3500

POST OFFICES

USPS.....(800) 275-8777
Glendale Main Post Office.....(818) 265-9214
313 E Broadway, Glendale, CA
Montrose Post Office(818) 249-9463
2100 Montrose Ave, Montrose, CA
Verdugo City Post Office(818) 249-1541
2816 Honolulu Ave, Verdugo City, CA

PARKS

Crescenta Valley Park.....(818) 249-5940
3901 Dunsmore Ave, La Crescenta, CA
Deukmejian Wilderness Park(818) 548-2184
3429 Markridge Rd, Glendale, CA
Dunsmore Park(818) 548-2184
4700 Dunsmore Ave, La Crescenta, CA
Glorietta Park.....(818) 548-6420
2801 N Verdugo Rd, Glendale, CA
L A County Dept of Parks & Rec.....(877) 601-4850
Montrose Park.....(818) 548-6420
3529 Clifton Place, Glendale, CA
Two Strike Park(818) 249-5940
5107 Rosemont Ave, La Crescenta, CA
Verdugo Park(818) 548-2184
1621 Canada Blvd, Glendale, CA

MEDIA/NEWSPAPERS

CRESCENTA VALLEY WEEKLY(818) 248-2740
3800 La Crescenta Ave #101, La Crescenta, CA
GLENDALE NEWS-PRESS(818) 637-3200
727 Foothill Blvd, La Cañada, CA
LA CAÑADA OUTLOOK(818) 790-7500
800 Foothill Blvd # B, La Cañada Flintridge, CA
LA CAÑADA VALLEY SUN(818) 790-8774
727 Foothill Blvd, La Cañada, CA
MONTROSE.PATCH.COM
Montrose-La Crescenta

OTHER LOCAL CHAMBERS OF COMMERCE

Crescenta Valley
Chamber of Commerce(818) 249-4957
www.crescentavalleychamber.org
Glendale Chamber of Commerce(818) 240-7870
www.glendalechamber.com
La Cañada Flintridge
Chamber of Commerce(818) 790-4289
www.lacanadaflintridge.com
Sunland-Tujunga
Chamber of Commerce(818) 352-4433
www.stchamber.com

CONSUMER INFORMATION

Better Business Bureau(703) 276-0100
3033 Wilson Blvd, Suite 600, Arlington, VA
www.bbb.org

CONSUMER INFORMATION (CONT.)

California Consumer Complaint
Department of Consumer Affairs(800) 952-5210
State Contractors Board.....(800) 321-2752
1625 N Market Blvd, Suite N 112, Sacramento, CA
www.dca.ca.gov

HALLS FOR RENT

American Legion Auxiliary 288(818) 541-1336
Post288@aol.com
Angeles National Golf Course(818) 951-8771
Knights of Columbus(818) 249-4539
La Cañada Country Club.....(818) 790-0611
La Crescenta Women's Club(818) 957-9806
Oakmont Country Club(818) 542-4292
Sparr Heights Community Center(818) 548-2187

UTILITIES

Glendale Water & Power(818) 548-3300
141 N Glendale Ave, 2nd Level, Glendale, CA
Southern California
Edison Company.....(800) 655-4555
Gas Company(800) 427-2200

TRANSPORTATION

Glendale Beeline.....(818) 548-3960
Beeline Shuttle Bus Info(818) 548-3960
MTA Info(323) 466-3876

CITY OF GLENDALE

City Hall Information(818) 548-4000
www.glendaleca.gov
Water, Light & Power.....(818) 548-3300
City Clerk/Licenses.....(818) 548-2090
Permits.....(818) 548-3200
www.ci.glendale.ca.us/permits.aspx

MONTROSE ARTS & CRAFTS FESTIVAL

First weekend in June

Sponsored by MSP(818) 957-7186
Montrose Shopping Park Assoc(818) 249-2499
PO Box 782, Montrose, CA

BUSINESS INFORMATION

SS-4 Employer ID Numbers(800) 829-1040
Employment Development Dept.....(800) 300-5616
www.edd.ca.gov
Small Business Administration(818) 552-3210
330 N Brand Blvd, Ste 1200, Glendale, CA
FAX: 818-552-3260 • www.sba.gov
State Board of Equalization (800)-400-7115
15350 Sherman Way, #250, Van Nuys, CA
Hours: Mon – Fri, 8am – 5pm • www.boe.ca.gov
California Workers Comp
LA District Office(800) 736-7401
320 W 4th Street, 9th floor, Los Angeles, CA
www.dir.ca.gov/dwc
Social Security Office(818) 549-0403
225 W Broadway, Ste 600 Glendale, CA
www.socialsecurity.gov

POLICE & FIRE PROTECTION

EMERGENCIES: DIAL 911

CALIFORNIA HIGHWAY PATROL(626) 296-8100
2130 Windsor Ave, Altadena, CA
GLENDALE FIRE DEPARTMENT(818) 548-4029
Montrose Fire Station #29
2465 Honolulu Ave, Montrose, CA
GLENDALE POLICE DEPARTMENT(818) 548-4840
131 N Isabel Street, Glendale, CA
LA COUNTY FIRE STATION 19(818) 249-1562
1729 Foothill Blvd, La Cañada, CA
LA COUNTY FIRE STATION 63(818) 248-2741
4526 Ramsdell Ave, La Crescenta, CA
LA COUNTY SHERIFF(818) 248-3464
4554 Briggs Ave, La Crescenta, CA
MONTROSE POLICE SUBSTATION(818) 249-8173
3808 Ocean View Blvd, Montrose, CA

HOSPITALS

GLENDALE ADVENTIST MEDICAL CTR ..(818) 409-8000
1509 Wilson Terrace, Glendale, CA
GLENDALE MEMORIAL.....(818) 502-1900
Central & Los Feliz, Glendale, CA
HUNTINGTON MEMORIAL HOSPITAL ...(626) 397-5000
100 Congress St, Pasadena, CA
USC VERDUGO HILLS HOSPITAL(818) 790-7100
1812 Verdugo Blvd, Glendale, CA

A G DENTAL STUDIO

MICHAEL AZNAVOUR, DDS
2255 HONOLULU AVE • UNIT B
MONTROSE, CA 91020
818.249.9054
AG-DENTALSTUDIO.COM
AGDENTALSTUDIO2@GMAIL.COM

A.I.A. INSURANCE

JEFF CHAN
1038 FOOTHILL BLVD
LA CAÑADA, CA 91011
818.790.1158
AIINSURANCEAGENTS.COM
JEFFC@AIINSURANCE.NET

ALEX THEATER

2160 N BRAND BLVD
GLENDALE, CA 91203
818.243.2539
ALEXTHEATER.ORG
INFO@GLENDALEARTS.ORG

**ALL PERSONAL PROPERTY
APPRAISALS & ESTATE**

DIANE DELLA VALLE
3354 RETA
LA CRESCENTA, CA 91214
818.957.1111
DELLAVALLELIQUIDATIONS.COM

ALTRUSA

ROSE PHARP
2735 PROSPECT AVE
LA CRESCENTA, CA 91214
818.248.8765
ALTRUSAGLENDALECA.COM
THARPRS@PACBELL.NET

AMADO PLUMBING

LYNN & MARY ANN AMADO
2713 FOOTHILL BLVD
LA CRESCENTA, CA 91214
818.248.2914
MAAMADO@ATT.NET

AMERICAN RED CROSS

RON FARINA
1501 S BRAND BLVD
GLENDALE, CA 91204
818.243.3121
REDCROSSBLOOD.ORG
AUSANTA.NEBBITT@REDCROSS.ORG

AMPLE POWER

JAMEY DUNFORD
3840 BRITTANY LANE
LA CRESCENTA, CA 91214
818.517.8019
AMPLEPOWERGENERATORS.COM
JAMEYDUNFORD@GMAIL.COM

Geography

The unincorporated part of La Crescenta-Montrose encompasses those parts of the Crescenta Valley, northwestern San Rafael Hills, and northeastern Verdugo Mountains not within the cities of Glendale or La Cañada Flintridge.



3436 N. Verdugo Rd.
Glendale, CA 91208

I.C.C. No MC107012

FEATURING A COMPLETE MOVING AND STORAGE SERVICE

- Long Distance Moving • Overseas • Safe Storage • Local Moving
- Packaging, Crating, & Shipping • California Moving

(818) 249-2016

ANAWALT LUMBER

BILL ANAWALT
3711 N VERDUGO RD
MONTROSE, CA 91020
818.249.1194
ANAWALTMONTROSE.COM
ANAWALT@MAC.COM

ANTHONY CHIROPRACTIC

MARK K ANTHONY
3935 FOOTHILL BLVD
LA CRESCENTA, CA 91214
818.957.7035
LACRESCENTACHIROPRACTOR.COM
ANTHONYCHIRO@SBCGLOBAL.NET

ANDY'S TRANSFER & STORAGE

PAT LONGO
3464 N VERDUGO RD
GLENDALE, CA 91208
818.249.2016
PATLONGO@ANDYSTRANSFER.COM

ARBITRAGE REAL ESTATE GROUP

ALBERT M HAIRAPETIAN
3500 N VERDUGO RD
GLENDALE, CA 91208
818.244.2939
REALESTATE123.COM
ALBERT@REALESTATE123.COM

ANGELES NATIONAL GOLF CLUB

9401 FOOTHILL BLVD
SUNLAND, CA 91040
818.951.8771
ANGELESNATIONAL.COM
INFO@ANGELESNATIONAL.COM

ARIANNA MEDICAL PHARMACY

KARMEN SEFIAN
3600 N VERDUGO RD • #103
GLENDALE, CA 91208
818.957.9200
ARIANNAPHARMACY.COM
INFO@ARIANNAPHARMACY.COM

ARKTOS WEALTH MANAGEMENT

FRANK A VIRGALLITO
3436 N VERDUGO RD • STE 210
GLENDALE, CA 91208
818.249.4984
FRANKVIRGALLITO.COM
FRANK.VIRGALLITO@NATPLAN.COM

ARTHUR MURRY DANCE STUDIO

ERICK & KATE PADILLA
2260 HONOLULU AVE
MONTROSE, CA 91020
626.790.8757
DANCEARTHURMURRAYGLENDALE.COM
ARTHURMURRAYMONTROSE@GMAIL.COM

**ASPIRE PHYSICAL THERAPY &
SPORTS PERFORMA**

CALLIE PERRY
4515 OCEAN VIEW BLVD • #320
LA CAÑADA, CA 91011
818.369.7620
ASPIREPHYSICALTHERAPY.COM
ADMIN@ASPIREPHYSICALTHERAPY.COM

ASSEMBLYMAN LAURA FRIEDMAN

BLAKE DELLINGER
300 EAST MAGNOLIA BLVD • STE 504
BURBANK, CA 91502
818.558.3043
A43.ASMDC.ORG
SAROJINI.LALL@ASM.CA.GOV

AUTO CLUB OF SO. CALIF.

ROBERT SILVA
2112 MONTROSE AVE
MONTROSE, CA 91020
818.249.3971
PINKSTON.DIANE@AAA-CALIF.COM

**BACK TO BASICS FITNESS AND
DANCE STUDIO**

GAIL MEDINA
2914 FOOTHILL BLVD
LA CRESCENTA, CA 91214
818.396.2603
B2BFIT.ORG
B2BFITNESSDANCE@YAHOO.COM

BELLIES, BABIES & BOSOMS

LAURA AGAKANIAN
2430 HONOLULU AVE
MONTROSE, CA 91020
818.541.1200
BELLIES.BIZ
INFO@BELLIES.BIZ



BERKSHIRE HATHAWAY

LINDA KNUDSON
4005 FOOTHILL BLVD
LA CRESCENTA, CA 91214
818.796.6783
LINDAKNUTSON.COM
LINDA4REALESTATE@YMAIL.COM

BEST LIFE YET! CONSULTING

LESLIE A LOUBIER
2027 MONTROSE AVE
MONTROSE, CA 91020
818.249.4300
BESTLIFEYET.NET
DRLOUBIER@BESTLIFEYET.NET

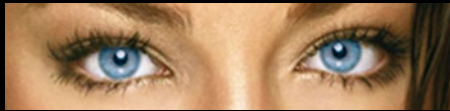
BEROLINA BAKERY & PASTRIES

ANDERS & YOUNA
3421 OCEAN VIEW BLVD
GLENDALE, CA 91208
818.249.6506
BEROLINABAKERY.COM
INFO@BEROLINA.COM

BHHS CREST REAL ESTATE

CARMEN MARTINEZ
4005 FOOTHILL BLVD
LA CRESCENTA, CA 91214
818.414.9530
BHHSCREST.COM

**BEEVE VISION CARE
CENTER**



*Comprehensive
Eye Care*

*An Ophthalmologist's exam may not only be
sight saving, it may be life saving.*



*Scott W. Beeve, MD, FACS is proud
to be part of this community!*

818.790.8001 www.drbeeve.com

1809 Verdugo Blvd., Suite 150 • Glendale, CA 91208

BIG MAMA'S AND PAPA'S PIZZERIA

RAYMOND BACSHEE
2307 HONOLULU AVE
MONTROSE, CA 91020
818.957.7577
BIGMAMASPIZZA.COM
RAYMONDBACHE@SBCGLOBAL.NET

BONA FIDE PLUMBING

ROBERT WOLLENWEBER
3971 VISTA CT
LA CRESCENTA, CA 91214
818.822.4279
BONAFIDEPLUMBING@GMAIL.COM

BRONSON PHOTOGRAPHY

BOB BRONSON
2060 MONTROSE AVE
MONTROSE, CA 91020
818.249.5864
BRONSONSTUDIO.COM

CASA CORDOBA

JEANNIE BONE
2331 HONOLULU AVE • STE C
MONTROSE, CA 91020
818.937.4445
CASACORDOBA.COM
JEANNIE@CASACORDOBA.US.COM

CASPIAN SERVICES, INC.

LEONARD GHAZARIAN
3959 FOOTHILL BLVD • STE 204
LA CRESCENTA, CA 91214
818.957.4488
CASPIANSERVICES.NET

Geography

La Crescenta-Montrose is bordered on the north by the San Gabriel Mountains and Angeles National Forest, on the east by La Cañada Flintridge, on the south by the Verdugo Mountains and central Glendale, and the northwest by the Sunland-Tujunga community of Los Angeles. The Foothill Freeway (I-210) runs through the southern portion of the area.

BLACK COW CAFE

JEFF WILLIAMS
2223 HONOLULU AVE
MONTROSE, CA 91020
818.957.5282
THEBLACKCOWCAFE.COM

BOB SMITH TOYOTA

MIKE & PETE SMITH
3333 FOOTHILL BLVD
LA CRESCENTA, CA 91214
818.248.9363
BOBSMITHTOYOTA.COM
PETE@BOBSMITHTOYOTA.COM

History

La Crescenta got its name from early settler Benjamin B. Briggs who from his home "could see three crescent-shaped formations, which suggested to him the artificial name," accepted by the U.S. Post Office in 1888.

CECIL C. ARMSTRONG BAIL BONDS

BILL ARMSTRONG
520 E WILSON AVE • #125
GLENDALE, CA 91206
818.241.2171
ARMSTRONGBAILBONDS.NET
INFO@ARMSTRONGBAILBONDS.NET

CHATEAU SALON

MARIANNA BAYRAMIAN
3815 OCEAN VIEW BLVD
MONTROSE, CA 91020
818.957.8127
CHATEAUSALON.COM

History

Montrose was chosen as the result of a contest for the subdivision established in 1913 on part of the La Crescenta development.

CHURCH OF SCIENTOLOGY

STACY KITCHENS
2254 HONOLULU AVE
MONTROSE, CA 91020
818.957.1500
FOOTHILLS.SCIENTOLOGYMISSIONS.ORG

CITY OF GLENDALE

SCOTT OCHOA
613 E BROADWAY
GLENDALE, CA 91206
818.548.4844
GLENDALECA.GOV

COMBINED WORK SITE SOLUTIONS

CYNTHIA BENGTON
2250 RICHEY DR
LA CAÑADA, CA 91011
818.606.5809
COMBINEDWORKSITE.COM
CYNTHIA.BENGTON@COMBINED.COM

Trivia

La Crescenta does not mean "the crescent," which in Spanish would be la creciente.

COMFORCARE HOME CARE

CHAD MARSHALL
3436 N VERDUGO RD • STE 101
GLENDALE, CA 91208
818.241.1102
COMFORCARE.COM
SANGABRIELVALLEY@COMFORCARE.COM

**COMMUNITY CENTER OF LA CAÑADA
FLINTRIDGE**

MAUREEN BOND
4469 CHEVY CHASE DR
LA CAÑADA, CA 91011
818.790.4353
CCLCF.ORG

COMMUNITY DIRECTORY

ALLAN HERBERT
2424 HONOLULU
MONTROSE, CA 91020
818.249.5224
CRESCENTACANADA.COM

CVI **CRESCENTA VALLEY INSURANCE**

3156 Foothill Blvd, Suite A, La Crescenta, CA 91214

Your Local Mercury Insurance Agent

Call for a FREE Quote Today

818-248-4500

COMMUNITY FOUNDATION OF THE VERDUGOS

EDNA KARINSKI
111 EAST BROADWAY • STE 200
GLENDALE, CA 91205
CFVERDUGOS.ORG
MELISSA@CFVERDUGOS.ORG

COMPUTER GUY LA

NORM KRAUSKOPF
3930 PARK PL • #2
MONTROSE, CA 91020
818.726.1503
COMPUTERGUYLA.COM

CRESCENTA VALLEY ADVENTIST SCHOOL

DEBRA POWELL
6245 HONOLULU AVE
LA CRESCENTA, CA 91214
818.249.1504
CVAS.NET
SECRETARY@CVAS.NET

CRESCENTA VALLEY CHAMBER

3131 FOOTHILL BLVD • STE D
LA CRESCENTA, CA 91214
818.248.4957
CRESCENTAVALLEYCHAMBER.ORG

Demographics

In 2013, Glendale was named LA's Neighborhood of the Year by the readers and editors of Curbed.com.

CRESCENTA VALLEY INSURANCE

RICK DINGER
3156 FOOTHILL BLVD • STE A
LA CRESCENTA, CA 91214
818.248.4500
CVINS.COM
RICK@CVINS.COM

CRESCENTA VALLEY LITTLE LEAGUE

SHAWN HOWARD
PO BOX 156
MONTROSE, CA 91021
CVLITTLELEAGUE.COM

CRESCENTA VALLEY MINI STORAGE

JIM DARR
4441 CLOUD AVE
LA CRESCENTA, CA 91214
818.957.6464
CVMINISTORAGE.COM

**CRESCENTA VALLEY UNITED
METHODIST CHURCH**

REV STEVE POTEETE-MARSHALL
2700 MONTROSE AVE
MONTROSE, CA 91020
818.249.6173
CVUMC.ORG
PLANETARYPIGRIM@GMAIL.COM

**CRESCENTA VALLEY WATER
DISTRICT**

CHRISTY SCOTT
2700 FOOTHILL BLVD
LA CRESCENTA, CA 91214
818.248.3925
CVWD.COM

CRESCENTA VALLEY WEEKLY

ROBIN GOLDSWORTHY
3800 LA CRESCENTA AVE • STE 101
LA CRESCENTA, CA 91214
818.248.2740
CVWEEKLY.COM
ROBIN@CVWEEKLY.COM

**CROWN CITY ANTIQUES & ESTATE
SALES**

FRANK FIMBR / JACQUELINE
PO BOX 830
VERDUGO CITY, CA 91046
818.249.6155
CROWNCITYESTATESALES.COM
CROWNCTY@AOL.COM

CROWN JEWEL HOMES

DAWNA THIBODEAU
2629 FOOTHILL BLVD
LA CRESCENTA, CA 91214
818.681.7320
CROWNJEWELHOMES.COM
DAWNA@CROWNJEWELHOMES.COM

CTS TAX AND BUSINESS SOLUTIONS

MELINDA THOMPSON
3436 N VERDUGO RD • #210
GLENDALE, CA 91208
818.542.6902
CTSOLUTIONS.COM

CUT & HUE HAIR SALON

LOURINE CHOULIJIAN
2027 N VERDUOG BLVD
MONTROSE, CA 91020
818.369.7440
CUEHAIRANDSKINCARE.COM
CUTANDHUE@GMAIL.COM

Glendale Public Safety Statistics

In 2014, Glendale was named the ninth-safest city in America in a report published by 24/7 Wall Street based on violent crime rates in cities with more than 100,000 people.

CV ARMENIAN CULTURAL FOUNDATION

2633 HONOLULU AVE
MONTROSE, CA 91020
ARMENIANCULTURALFOUNDATION.ORG

DESI GEESTMAN FOUNDATION

ILEANA GEESTMAN
2708 FOOTHILL BLVD • STE 133
LA CRESCENTA, CA 91214
818.249.1105

Demographics

Glendale has one of the largest communities of Armenian descent in the United States.

DESIGN ON THE SQUARE

BRIAN VIEHLAND
2100 MONTROSE AVE • #526
MONTROSE, CA 91021
818.797.5526
DESIGNONTHESQUARE.COM
BRIAN@DESIGNONTHESQUARE.COM

DIGGS

KENDYL YOUNG
3819 OCEAN VIEW BLVD
MONTROSE, CA 91020
818.396.7588
GLENDALEDIGGS.COM
KENDYL@GLENDALEDIGGS.COM

DILBECK

JULIE ANN MARTIN
600 N BRAND BLVD
GLENDALE, CA 91203
818.613.1993
DILBECK.COM
MJULIE6811@GMAIL.COM

DILBECK REALTORS

SUSAN LINDSEY
2943 FOOTHILL BLVD
LA CRESCENTA, CA 91214
818.248.2248
DILBECK.COM

CaIBRE#0138092

Dilbeck

REAL ESTATE

JULIE ANN MARTIN

Love where you live

2017 President Montrose-Verdugo City Chamber of Commerce



It's a pleasure to serve this area; I'm a life-long resident too!



julieannrealestate@gmail.com
julieannmartin.dilbeck.com

600 N BRAND BLVD | GLENDALE CA 91203 | 818-613-1993

DOUGLAS M FARR & CO., INC

EMILY FARR
2236 MAURICE DR
LA CRESCENTA, CA 91214
818.957.0845
DMFARR.COM
EMILY@DMFARR.COM

EL CHARRO

DEBORAH BELJAN
3741 NOVERDUGO RD
MONTROSE, CA 91020
818.249.2405

ELECTROMOTIVE INC.

TODD BLACK
2629 FOOTHILL BLVD • #142
LA CRESCENTA, CA 91214
818.527.9370
INFO@ELECTROMOTIVE.CO

ESCROWS FOR YOU, INC.

DONNA NELSON
3547 OCEAN VIEW BLVD
GLENDALE, CA 91208
818.957.7100
ESCROWSFORYOU.COM
DONNA@ESCROWSFORYOU.COM

ESQUIRE LAW FIRM INC

VICTOR HAIRAPETIAN
3500 N VERDUGO RD
GLENDALE, CA 91208
818.500.9881
ESQLAWFIRM.COM
MAIL@ESQLAWFIRM.COM

Geography

According to the United States Census Bureau, Glendale has a total area of 30.6 square miles; 30.5 square miles of it is land and 0.13 square miles of it (0.43%) is covered by water.



**Don't See Your
Company's Ad?**

Don't Worry!

Call one of our Sales Experts at
Liberty Marketing to reserve your
spot for the next directory, today!

1-800-954-MAPS
6 2 7 7

LibertyMapAds.com

ETC...GOURMET KITCHEN

ROBIN SEIFERT
3600 OCEAN VIEW BLVD
MONTROSE, CA 91208
818.249.3587
ETCGOURMET.COM
ROBIN@ETCGOURMET.COM

EXECUTIVE JEWELERS

GARO & MARAL ANSERLIAN
2289 HONOLULU AVE
MONTROSE, CA 91020
818.249.3027
EXECUTIVEJEWELERS.COM
GAROMARS@YAHOO.COM

EVENT POWER ASSOCIATES

BILL GEIST
3585 EMANUEL DR
GLENDALE, CA 91208
818.249.7629
BILLGEIST@WORLDNET.ATT.NET

FAST FRAME

BEVERLY AND FRANK DELUCIA
3423 OCEANVIEW BLVD
MONTROSE, CA 91208
818.249.7603
FASTFRAMELACANADA.COM

Etc... Gourmet Kitchen



Bakery • Cafe • Catering

3600 Ocean View Blvd in Montrose. 818-249-3587

www.etcgourmet.com

FATCAT DJ SERVICE

ERNIE MURAOKA
3501 SIERRA VISTA AVE
GLENDALE, CA 91208
818.653.6841

**FIRST BAPTIST CHURCH
AT LA CRESCENTA**

PASTOR BILL FLANDERS
4441 LA CRESCENTA AVE
LA CRESCENTA, CA 91214
818.249.5832
FBCLC.ORG
BFLANDERS@FBCLC.ORG

Demographics

Glendale is a city in Los Angeles County, California, United States. Its estimated 2014 population was 200,167, making it the third largest city in Los Angeles County.

FLINTRIDGE DENTAL GROUP

AZAN REZAEI
1035 FOOTHILL BLVD
LA CAÑADA, CA 91011
818.962.6000
FLINTRIDGEDENTALGROUP.COM
AZINDDS@FDG2.COM

FOOTHILL COMMUNITY CHURCH

PO BOX 784
MONTROSE, CA 91021
818.248.5425
FOOTHILLCOMMUNITYCHURCH.ORG

FOOTHILL PAINTING COMPANY

DON FREED
10012 COMMERCE AVE
TUJUNGA, CA 91042
818.352.2888
FOOTHILLPAINTING.COM
INFO@FOOTHILLPAINTING.COM

FOOTHILL RETIREMENT

TONI WILLIAMSON
6720 ST ESTABAN ST
TUJUNGA, CA 91042
818.353.3350
FOOTHILLRETIREMENT.NET
TONI.WILLIAMSON@
FOOTHILLRETIREMENT.US

FORWARD FITNESS STUDIO

ELIZABETH FAUNCE
2623 HONOLULU AVE
MONTROSE, CA 91020
818.426.9686
E.FAUNCE@ATT.NET

FRANK'S VACUUM & SEWING

JULIE & HARLIN
2145 VERDUGO BLVD
MONTROSE, CA 91020
818.248.5411
RANKSVACUUMSEWING.COM
FRANKSVACUUM@SBCGLOBAL.NET

**FRED VILLARI'S STUDIOS
OF SELF DEFENSE**

ARMEN HEROIAN
3601 OCEAN VIEW BLVD • #G
GLENDALE, CA 91208
818.957.7544
VILLARIGLENDALE.COM

FRIENDS OF ROCKHAVEN

JOANNA LINCKHORST
PO BOX 573
VERDUGO CITY, CA 91046
FRIENDSOFROCKHAVEN.ORG
FRIENDSOFROCKHAVEN@GMAIL.COM

GARY DEUKMEDJIAN, DDS

GARY DEUKMAJIAN
21010 BROADVIEW DR
GLENDALE, CA 91208
818.839.1162
DEUKDENTISTRY@YAHOO.COM

Geography

Only a small portion of La Crescenta-Montrose is unincorporated, while the vast majority of it is within Glendale.

GAS COMPANY

TONY / MARISOL ESPINOZA
919 S CENTRAL AVE • UNIT B
GLENDALE, CA 91204
818.551.7144
SOCALGAS.COM
MESPINOZA2@SEMPRAUTILITIES.COM

GINA FEEDS

GINA SEGAL
3527 N VERDUGO RD
GLENDALE, CA 91208
818.693.2901
GINAFEEDS.COM
GINA@GINAFEEDS.COM

GIO'S BAGUETTES & MORE

AZNIV FERNEZLIAN
3805 OCEAN VIEW BLVD
MONTROSE, CA 91020
818.330.7135
GIOSBAGUETTES.COM
GIOSBAGUETTES@GMAIL.COM

GIOVANISCI, DDS

DR. GIOVANISCI
2103 MONTROSE AVE • STE A
MONTROSE, CA 91020
818.248.1718
STEPHENGIOVANISCIDDS.COM
STEPHENGIOVANISCI@YAHOO.COM

GIUSEPPE'S

2428 HONOLULU AVE
MONTROSE, CA 91208
818.957.1313
MONTROSEPIZZA.COM
MCAPINC@GMAIL.COM

Geography

Glendale is located at the junction of two large valleys, the San Fernando and the San Gabriel.

GLENDALE ADVENTIST MEDICAL CENTER - REHAB

1509 WILSON TER
GLENDALE, CA 91206
818.409.8071
ADVENTISTHEALTH.ORG/GLENDALE/
PAGES/DEFAULT.ASPX

History

The area of La Crescenta-Montrose was originally part of the homelands of the Tongva people (or "People of the Earth").

GLENDALE AREA SCHOOL F.C.U.

WESLEY WALTON
1800 BROADVIEW
GLENDALE, CA 91208
818.248.7425 X13
GASCU.ORG
STUARTCU@AOL.CA

GLENDALE ARTS

NINA CROWE
116 W CALIFORNIA AVE
GLENDALE, CA 91204
818.552.2787
GLENDALEARTS.ORG
NCROWE@GLENDALEARTS.ORG

GLENDALE CHAMBER OF COMMERCE

JUDEE KENDALL
701 N BRAND BLVD • STE 120
GLENDALE, CA 91203
818.240.7870
GLENDALECHAMBER.COM

GLENDALE ECONOMIC DEVELOPMENT CORP

PHILIP S. LANZAFAME
633 E BROADWAY • STE 201
GLENDALE, CA 91206
818.548.2005
GLENDALECA.GOV
APOGOSSIAN@GLENDALECA.GOV

GLENDALE EDUCATIONAL FOUNDATION

ELSA P. CHAGOLLA
1125 E BROADWAY • #391
GLENDALE, CA 91205
818.247.0466
GLENED.ORG
INFO@GLENED.ORG

GLENDALE HEALTHY KIDS

PO BOX 201
GLENDALE, CA 91209
818.548.7931
GLENDALEHEALTHYKIDS.ORG
INFO@GLENALEHEALTHYKIDS.ORG

Climate

Glendale has a Mediterranean climate. The highest recorded temperature in Glendale was 110 °F on several occasions. The lowest recorded temperature was 17 °F in February 2003. The warmest month is August and the coolest month is January. The rainfall is highest in February and lowest in July. The hills and mountains of northern Glendale very rarely have snow.

Main Street is like a slice of Hometown Americana: It takes you back to the days when you met at the counter of the local soda shop, walked your mail down to the post office and shopped at the general store for all of your needs. It speaks to an era when life was less hectic and moved at a friendlier pace. This is what you will find when you “Come Home To Montrose.” The Montrose Shopping Park is beautiful tree-lined street on Honolulu Avenue that is a delight to stroll down. This main shopping district in Montrose is comprised of a variety of restaurants, service shops, boutiques, clothing stores, and fitness studios catering to the needs of the local community. At the Montrose Shopping Park the shops are friendly and the merchandise is different.

Our shops aren't chain stores, they are “mom-and-pop” shops where the storeowners know customers on a first-name basis and customers get to know the local merchants, receiving personal help in finding that “special item.” The Montrose Shopping Park is a special district within the City of Glendale who designated Montrose as Glendale's official “Old Town.” Montrose continues to be one the premier gems in Glendale's crown. Remember, when you come to Montrose to shop you are doing

so much more than picking up the items you want and need. You are helping to sustain our area and our local economy. That is why we encourage you to “Shop Local First”. Why shop at a locally owned business first?

The following 10 reasons show how more money spent at local businesses is reinvested in your community creating diversity and helping the community maintain and create its unique appeal. So please remember to support your local businesses.

Top Ten reasons to Think Local – Buy Local – Be Local

1. Supports Yourself and Keeps Dollars in the Local Economy:

Your dollars spent in locally-owned businesses have three times the impact on your community as dollars spent at national chains. When shopping locally, you simultaneously create jobs, fund more city services through sales tax, invest in neighborhood improvement and promote community development.

2. Keeps our Community Unique:

Where we shop, where we eat and have fun — all of it makes our community home. Our one-of-a-kind businesses are an integral part of the distinctive character of this place.

3. Fosters Local Decision Making:

Local businesses are owned by people who live in this community making them less likely to leave and are more invested in the community's future. Local ownership means that important decisions are made locally by people who live in the community and who will feel the impacts of their decisions. Local stores help to sustain vibrant, compact, walkable town centers-which in turn are essential to reducing sprawl, automobile use, habitat loss, and air and water pollution.

4. Encourages Local Prosperity:

Entrepreneurship fuels America's economic innovation and prosperity, and serves as a key means for families to move out of low-wage jobs and into the middle class.

5. Creates More Good Jobs:

Small local businesses are the largest employer nationally and in our community, provide the most jobs to residents.

6. Local Shops Value You More:

Evidence from numerous surveys show people receive better customer care and service locally. Local businesses survive by their reputation and repeat business. This means you get a higher standard of service and people with a better understanding of the products they are selling who take more time to get to know you.

7. Buy what you want, not what someone wants you to buy:

A marketplace of tens of thousands of small businesses is the best way to ensure innovation and low prices over the long-term.

8. Puts Your Taxes to Good Use:

Local businesses in town centers require comparatively little infrastructure investment and make more efficient use of public services as compared to nationally owned stores entering the community.

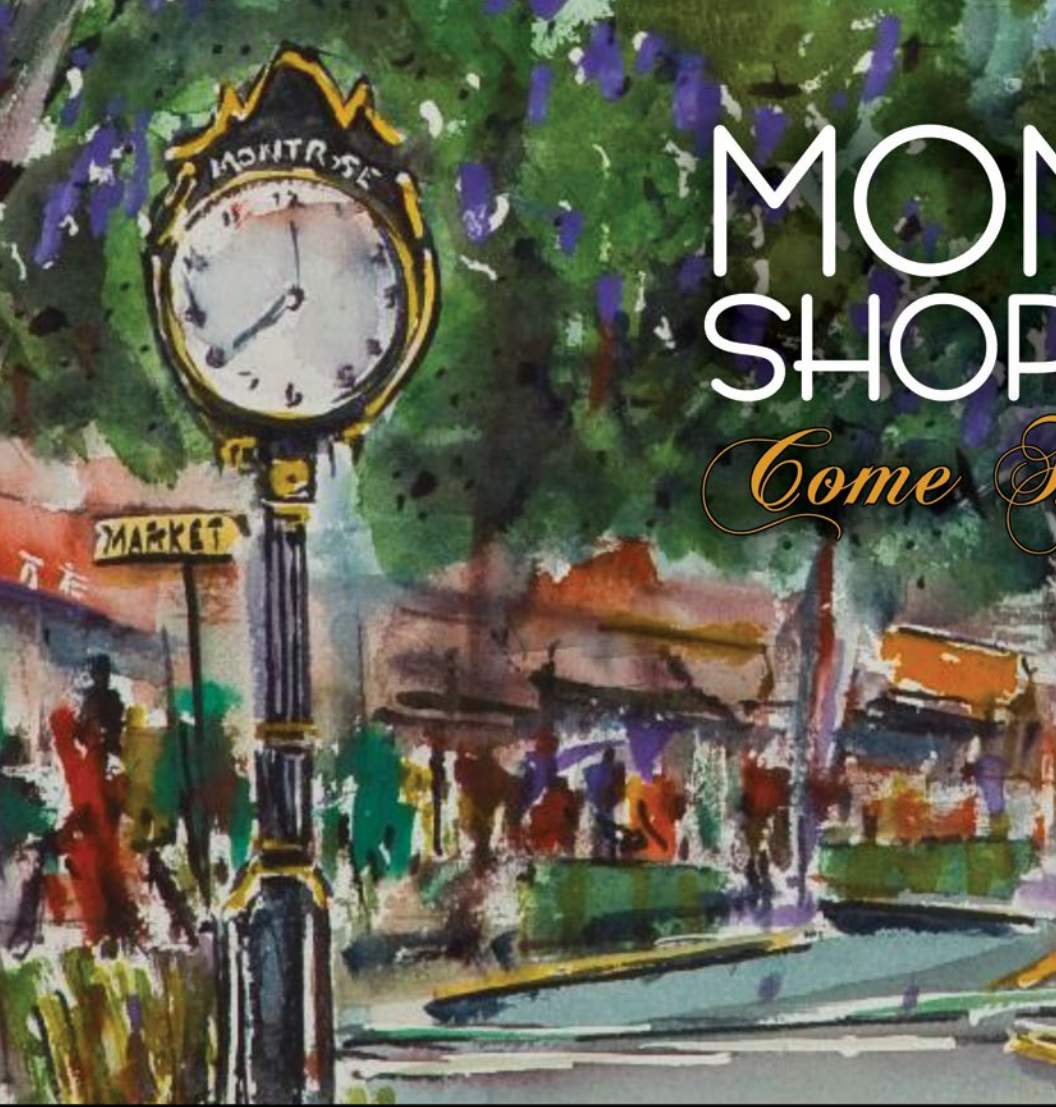
9. Supports Community Groups and Organizations:

Small business owners give, on average, 250% more support to local community groups than larger businesses give. This contribution gives more support to our local community.

10. Reduces Environmental Impact:

Locally owned businesses often stock a high percentage of local sourced goods requiring less transportation and generally set up shop in town or city centers as opposed to developing on the fringe.

Shopping locally is very important to our city, our merchants, and to you, our citizens. When you shop in Montrose, Verdugo City, parts of La Crescenta and Glendale, you save time and money; you also invest in our future and enable our business community to grow. Local Services such as Police, Fire, Parks, Libraries, Street Repairs and Water Services depend on sales tax dollars. The Chamber of Commerce urges you to shop locally and keep your tax dollars benefiting you. ❖



MON SHOP

Come &

Take a step back in time to an era when life was less hectic

SEASONAL EVENTS

- Annual Car Show
- Arts & Crafts Festival
- Old Towne Christmas
- Wags & Whiskers
- Weekly Harvest Market & Marketplace

W

- 3
- "or
- ca
- U
- wh



NTROSE PPING PARK

Home to Montrose

and moved at a friendlier pace & Come Home to Montrose.

www.shopmontrose.com

3 scenic blocks full of over 150
"one of a kind" shops, salons, spas, sidewalk
cafes & premier dining destinations.

We are located just 15 minutes North of Downtown LA
where the 2 & 210 freeways meet at Angeles Crest Highway.

ELEMENTARY SCHOOLS

Abraham Lincoln Elementary School..... Public · K-6, 4310 New York Ave, La Crescenta, CA 91214
Balboa Elementary School..... Public · K-6, 1844 Bel Aire Dr, Glendale, CA 91201
Benjamin Franklin Elementary School..... Public · K-6, 1610 Lake St, Glendale, CA 91201
Cerritos Child Development Center Public · K-6, 120 E Cerritos Ave, Glendale, CA 91205
College View School Public · K-12, 1700 E Mountain St, Glendale, CA 91207
Columbus Elementary School Public · K-5, 425 W Milford St, Glendale, CA 91203
Dunsmore Elementary School..... Public · K-6, 4717 Dunsmore Ave, La Crescenta, CA 91214
Glenoaks Elementary School Public · K-6, 2015 E Glenoaks Blvd, Glendale, CA 91206
Horace Mann Elementary School Public · K-5, 501 E Acacia Ave, Glendale, CA 91205
John C Fremont Elementary School Public · K-6, 3320 Las Palmas Ave, Glendale, CA 91208
John Marshall Elementary School Public · K-5, 1201 E Broadway, Glendale, CA 91205
John Muir Elementary School..... Public · K-6, 912 S Chevy Chase Dr, Glendale, CA 91205
La Crescenta Elementary School Public · K-6, 4343 La Crescenta Ave, La Crescenta, CA 91214
Mark Keppel Elementary School..... Public · K-5, 730 Glenwood Rd, Glendale, CA 91202
Monte Vista Elementary School Public · K-6, 2620 Orange Ave, La Crescenta, CA 91214
Mountain Ave Elementary School..... Public · K-6, 2307 Mountain Ave, La Crescenta, CA 91214
R D White Elementary School Public · K-5, 744 E Doran St, Glendale, CA 91206
Thomas Edison Elementary School Public · K-6, 435 S Pacific Ave, Glendale, CA 91204
Thomas Jefferson Elementary School..... Public · K-6, 1540 Fifth St, Glendale, CA 91201
Valley View Elementary School Public · K-6, 4900 Maryland Ave, La Crescenta, CA 91214
Verdugo Academy..... Public · K-12, 4700 Lauderdale Ave, La Crescenta, CA 91224
Verdugo Woodlands Elementary School Public · K-6, 1751 N Verdugo Rd, Glendale, CA 91208

MIDDLE SCHOOLS

Eleanor J Toll Middle School..... Public · 6-8, 700 Glenwood Rd, Glendale, CA 91202
Jewel City Community Day School Public · 8-9, 440 W Lomita, Glendale, CA 91204
Rosemont Middle School Public · 7-8, 4725 Rosemont Ave, La Crescenta, CA 91214
Theodore Roosevelt Middle School..... Public · 6-8, 222 E Acacia Ave, Glendale, CA 91206
Woodrow Wilson Middle School..... Public · 6-8, 1221 Monterey Rd, Glendale, CA 91206

HIGH SCHOOLS

Anderson W Clark Magnet High School.... Public · 9-12, 4747 New York Ave, La Crescenta, CA 91214
Crescenta Valley High School..... Public · 9-12, 2900 Community Ave, La Crescenta, CA 91214
Daily (Allan F) High (Continuation) School Public · 9-12, 220 N Kenwood, Glendale, CA 91206
Glendale High School Public · 10-12, 1440 E Broadway, Glendale, CA 91205
Herbert Hoover High School..... Public · 9-12, 651 Glenwood Rd, Glendale, CA 91202

COLLEGES & ADULT SCHOOLS

Glendale Community College (818) 240-1000
1500 N Verdugo Rd, Glendale 91208
Glendale Community College – Adult Community Training Center (818) 243-3184
1122 E Garfield Ave, Glendale 91205
Glendale Community College – Community Services Education (818) 548-0864
1122 E Garfield Ave, Glendale 91205
Professional Development Center (818) 957-0024
2340 Honolulu Ave, Montrose 91020

NAME	PHONE NUMBER
AMERICAN LEGION AUXILLARY 288 4011 La Crescenta Ave, La Crescenta, CA 91214 • E-mail: post288@aol.com	(818) 541-1336
AMERICAN RED CROSS GLENDALE 1501 S Brand Blvd, Glendale, CA 91204	(818) 243-3121
BEGROUP 516 Burnett St, Glendale, CA 91203	(818) 638-4533
BOY SCOUTS OF AMERICAN VERDUGO HILLS COUNCIL 1325 Grandview Ave, Glendale, CA 91201 • Website: vhcbsa.org	(818) 243-6282
CAÑADA CRESCENTA DEMOCRATIC CLUB 2530 Orange Ave, La Cañada, CA 91011	(818) 957-7976
COMMUNITY FOUNDATION OF THE VERDUGOS	n/a
111 East Broadway, Suite 200, Glendale, CA 91205	
CRESCENTA VALLEY ROTARY CLUB	n/a
PO BOX 81, Montrose, CA 91020	
CRESCENTA VALLEY HIGH SCHOOL AFJROTC (CA-882)	(818) 249-5871, x8104
2900 Community Avenue, La Crescenta, CA 91214	
CV ALLIANCE	(818) 646-7867
3131 Foothill Blvd, Suite D, La Crescenta, CA 91214	
CV ARMENIAN CENTER	(818) 248-1100
2633 Honolulu Ave, Montrose, CA 91020	
DESI GEESTMAN FOUNDATION, ILEANA GEESTMAN	(818) 249-1105
2708 Foothill Blvd, Ste 133, La Crescenta, CA 91214	
ELKS LODGE GLENDALE	(818) 242-2105
120 E Colorado St, Glendale, CA 91205	
GIRLS SCOUTS OF USA MT WILSON VISTA COUNCIL	(888) GSGLA-4-U
www.girlscoutsla.org	
GLENDALE EDUCATIONAL FOUNDATION	(818) 247-0466
249 N Brand, #391, Glendale, CA 91203	
GLENDALE HEALTHY KIDS	(818) 548-7931
735 E Lexington Dr, Glendale, CA 91206	
GLENDALE TEACHERS ASSOCIATION	(818) 240-3924
3233 N Verdugo Rd, Glendale, CA 91208	
KIWANIS CLUB OF GLENDALE	n/a
PO Box 10545, Glendale, CA 91209-3545	
KIWANIS CLUB OF MONTROSE-LA CRESCENTA	n/a
PO Box 432, Montrose, CA 91021	
KNIGHTS OF COLUMBUS	(818) 249-4539
2657 Honolulu Ave, Montrose, CA 91020	
LA CRESCENTA WOMEN'S CLUB	(818) 957-9806
4004 La Crescenta Ave, Montrose, CA 91020	
MONTROSE SEARCH & RESCUE TEAM	n/a
lasdmontrosesar@gmail.com	
PROMPLUS	n/a
info@promplus.org	
SOROPTIMIST – INTL OF THE VERDUGOS	n/a
3836 Los Olivos Lane, Glendale, CA 91214	
SPARR HEIGHTS BUSINESS DISTRICT ASSOC.	n/a
PO Box 722, Montrose, CA 91021	
VOICE – GLENDALE/CRESCENTA	n/a
Attn: Marc Stirdivant, PO Box 273, Montrose, CA 91021	
VFW POST 1641	(818) 249-9380
2937 Honolulu Ave, La Crescenta, CA 91214	
YMCA OF THE FOOTHILLS	(818) 790-0123
1930 Foothill Blvd, La Cañada Flintridge, CA 91011	

Government Structure

In 1914, eight years after the City of Glendale was incorporated, a Council-Manager system government was established.

Under that system, Glendale residents elect five members of the City Council to enact laws and established city policies. Council members hold office for overlapping terms of four years, and each year they select one member to serve as Mayor.

The Members of the City Council also serve as the Glendale Redevelopment Agency. The elected council members appoint a City Manager to administer the enforcement of all policies and ordinances, to prepare and annual budget, to supervise long-range planning and to administer the various city decisions. Those divisions are headed by experienced, professional directors and staffed by personnel selected on the basis of merit and ability.

Following is a list of elected and appointed city officials.

COUNCIL MEMBERS

MAYOR Vartan Gharpetian

Paula Devine

Ara Najarian

Zareh Sinanyan

Vrej Agajanian

City Government

613 E. Broadway, Suite 200

Glendale, California 91206

(818) 548-4844, FAX (818) 547-6740

www.glendaleca.gov

At time of printing some additional information was unknown regarding addresses and phone numbers Please consult www.montrosechamber.org or your local directory.

Government Representatives

PRESIDENT

Donald Trump White House..... (202) 456-1111
1600 Pennsylvania Ave, NW, Washington, DC 20500
president@whitehouse.gov • whitehouse.gov

UNITED STATES SENATORS

Kamala Harris (D) District Office (213) 894 - 5000
312 No Spring St, #1748, LA 90012
senator@harris.senate.gov • harris.senate.gov

Diane Feinstein (D) District Office (310) 914-7300
11111 Santa Monica Blvd, Suite 915, Los Angeles, CA 90025
senator@feinstein.senate.gov • feinstein.senate.gov

REPRESENTATIVES IN CONGRESS

Adam Schiff (R) Local Office..... (818) 450-2900
(28th District) 245 E Olive Ave, Suite 200, Burbank, CA 91502
FAX (818) 450-2928 • mary.hovagimian@mailhouse.gov • schiff.house.gov

CALIFORNIA GOVERNOR

Jerry Brown (D) Local Office..... (213) 897-0322
300 S Spring St, Suite #16701, Los Angeles, CA 90013
FAX (213) 897-0319

LIEUTENANT GOVERNOR

Gavin Newsom (916) 445-8994
State Capitol, Suite 1114, Sacramento, CA 95814
ltg.ca.gov

CALIFORNIA STATE SENATOR

Anthony J. Portantino (D) (818) 409-0400
(25th District) 116 East Broadway, Suite 204, Glendale, CA 91202
FAX (818) 409-1256 • sd25.senate.ca.gov

STATE ASSEMBLY

Laura Friedman (D) Local Office..... (818) 558-3043
(43rd District) 300 E Magnolia Blvd, Suite 504, Burbank, CA 91502-1145
FAX (818) 558-3042 • asm.ca.gov

COUNTY OF LOS ANGELES

Supervisor Kathryn Barger
(5th District) 215 N Marengo #120, Pasadena, CA 91101..... (626) 356-5407
kathrynbarger.lacounty.gov
500 W Temple #869, Los Angeles, CA 90012..... (213) 974-5555
kathryn@bos.lacounty.gov

CRESCENTA VALLEY TOWN COUNCIL

Harry Leon (818) 248-9387
(President) PO Box 8676, La Crescenta, CA 91224
contact@thecvcouncil.com • thecvcouncil.com

**GLENDALE NEWS-PRESS TIMES
COMMUNITY NEWS**

DENNIS CHAPOVAL
202 WEST FIRST ST
LOS ANGELES, CA 90012
213.237.5937
LATIMES.COM/SOCAL/GLENDALE-
NEWS-PRESS
DENNIS.CHAPOVAL@LATIMES.COM

GLENDALE TEACHERS ASSOCIATION

N VERDUGO RD
GLENDALE, CA 91208
818.240.3924
GLENDALETEACHERS.ORG

GLENDALE YOUTH ORCHESTRA

MARA KELLY
PO BOX 4401
GLENDALE, CA 91222
626.799.7159
GLENDALAYOUTHORCHESTRA.COM
MARASKELLY@GMAIL.COM

GRAYSON'S TUNE TOWN

KEN GRAYSON
2415 HONOLULU AVE
MONTROSE, CA 91020
818.249.0993
GRAYSONSTUNETOWN.COM
CONTACT@GRAYSONSTUNETOWN.COM

HAMLET POOLS

HAMLET NAZARRIAN
3447 OCEAN VIEW BLVD
GLENDALE, CA 91208
818.244.4438
HAMLETPOOL@YAHOO.COM

**HERA MARKARIAN INSURANCE
AGENCY**

HERA MARKARIAN
2303 FLORENCITA AVE
MONTROSE, CA 91020
818.405.7700
FARMERSAGENT.COM/HMARKARIAN

Coverage for all the things you care for.



HERA MARKARIAN

2302 FLORENCITA AVE
MONTROSE, CA 91020
(818) 405-7700
CA License # 0110090



Call (818) 405-7700 for Auto, Home, Life and Business.

J'adore Boutique



3806 Oceanview Blvd
Montrose, CA 91020

(818) 248-5550
jadorebtq.com

HILLCREST PET HOSPITAL

EDWARD FRIES
PO BOX 661270
ARCADIA, CA 91066
818.249.2092
HILLCRESTHOSPITAL.COM
HILLCREST@PETDOCS.COM

HISTORICAL SOCIETY OF CRESCENTA VALLEY

MICHAEL LAWLER
2717 ALTURA AVE
LA CRESCENTA, CA 91214
818.957.2968
CVHISTORY.ORG

HOLY REDEEMER CATHOLIC CHURCH

FATHER ED DOVER
2411 MONTROSE AVE
MONTROSE, CA 91020
818.249.2008
HRSJCATHOLIC.COM

INTEGRAL ENGINEERING SERVICE, INC.

DARREN AZARIAN
3926 VISTA CT
GLENDALE, CA 91214
818.968.5865
INTEGRALENGINEERINGSERVICES.COM

J'S MAINTENANCE SERVICE

CHRIS WALDHEIM
3550 FOOTHILL BLVD
LA CRESCENTA, CA 91214
818.247.8778 X223
JSMANTENANCE.COM
CHRISWFO@AOL.COM

Glendale Historical Population

Census	Pop.	%±
1910	2,746	—
1930	62,736	363.5%
1950	95,702	15.9%
1970	132,664	11.1%
1990	180,038	29.5%
2010	191,719	-1.7%
Est. 2016	200,831	4.8%U.S.

Decennial Census



A FULL SERVICE COMPANY

Sales & Acquisitions

Management / Maintenance

Apartments / Single Family Homes

Homeowner's Associations

Enjoy a level of service rarely found in today's marketplace

Your Profit Defines Our Excellence

>> For a FREE Evaluation Call Today (818) 542-6850 ext. #102
jpmc2000.com

JENKINS PROPERTIES MGMT.CO.

JOHN KELLY
2626 HONOLULU AVE
MONTROSE, CA 91020
818.542.6850
JPMC2000.COM
OSCARP@JPMC2000.COM

JEREMY'S ELECTRIC

JEREMY JOVER
3009 HONOLULU AVE
LA CRESCENTA, CA 91214
818.249.5656
TUJUNGAELECTRICIAN.COM

JOHN SPARR TAVERN

DAVE FINK
3437 OCEAN VIEW BLVD
GLENDALE, CA 91208
JOHNSPARRTAVERN.COM
DAVEFINK@AOL.COM

KARO'S ADVANCED MASSAGE & BODYWORKS

KARO SARKISIAN
520 E BROADWAY • STE 302
GLENDALE, CA 91205
323.428.5951
KAROS.MASSAGETHERAPY.COM
KAROSSMASSAGE4U@YAHOO.COM

KEBAB DADDY

JAINA ORPHA
3701 OCEAN VIEW BLVD • STE A3
MONTROSE, CA 91020
818.249.3233
KEBABDADDY.COM
WWW.KEBABDADDY.COM

KELLY & SMALL, CPA

DAVID SMALL
3529 OCEAN VIEW BLVD
GLENDALE, CA 91208
818.249.9896
KELLYSMALLCPA.COM
DAVID@KELLYSMALLCPA.COM

KIDS ART

ANNA SCHEKLOW
2264 HONOLULU AVE
MONTROSE, CA 91020
818.248.2483
KIDSARTCLASSES.COM
KIDSARTMONTROSE@GMAIL.COM

KIWANIS CLUB OF GLENDALE

PO BOX 10545
GLENDALE, CA 91209
818.434.3935
GLENDALEKIWANIS.INFO
VNL@VNLA.COM

KOBEISSI PROPERTIES

MIKE KOBEISSI
2429 HONOLULU AVE
MONTROSE, CA 91020
818.636.6146
KOBEISSIPROPERTIES.COM
SANDY@KOBEISSIPROPERTIES.COM

**LA CAÑADA AIR CONDITIONING
& HEATING**

JOSEPH POPLAR
1901 BROADVIEW DR
GLENDALE, CA 91208
818.790.8000
LACANADAAIR.COM

Kelly & Small
CERTIFIED PUBLIC ACCOUNTANTS, LLP

3529 OCEAN VIEW BLVD | GLENDALE, CA, 91208
PHONE: (818) 249-9896 | FAX: (818) 249-6533 | KELLYSMALLCPA.COM

LA CAÑADA CHAMBER

PAT ANDERSON
4529 ANGELES CREST HWY • #102
LA CAÑADA, CA 91011
818.790.4289
LACANADAFLINTRIDGE.COM

LA CAÑADA EYE CARE

TONY CHAHINE
1419 FOOTHILL BLVD
LA CAÑADA, CA 91011
818.790.0422
2020@LCEYECARE.COM

LA CAÑADA OUTLOOK NEWS

CHARLIE PLOWMAN
PO BOX 578
LA CAÑADA, CA 91012
818.790.7500
OUTLOOKNEWSPAPERS.COM
OUTLOOKADS@OUTLOOKNEWSPAPERS.COM

**LA CAÑADA VALLEY TIMES
COMMUNITY NEWS**

DENISE BURDETTE
202 WEST FIRST ST
LOS ANGELES, CA 90012
213.237.5937
LATIMES.COM/SOCAL/LA-CANADA-VALLEY-SUN
DENNIS.CHAPOVAL@LATIMES.COM

LAW OFFICES OF JAMES BATES

JAMES BATES
1055 E COLORADO BLVD • 5TH FLOOR
PASADENA, CA 91126
818.248.1911
JBATESLAW.COM
JBATES@JBATESLAW.COM

Culture

Forest Lawn Memorial Park Cemetery in Glendale contains the remains of many noted celebrities and local residents.



DR. TONY CHAHINE
Diplomate
Cornea & Contact Lenses
American Academy of Optometry

*Family Eye Care - Pediatrics & Adults
Spectacles, Laser Procedures & Orthokeratology
Specialty in Contact Lenses*

1419 Foothill Boulevard • La Cañada, California 91011
Tel. 818-790-0422 • Fax 818-790-0484



PIZZA • PASTA • SANDWICHES

818-790-6277

WE DELIVER

(\$12 MIN. - LIMITED 5 MILE RADIUS)

**1537 FOOTHILL BLVD
LA CAÑADA FLINTRIDGE**

www.LaCanadaImports.com

LAW OFFICES OF
JAMES W. BATES
A PROFESSIONAL CORPORATION

- COMPLEX CIVIL AND COMMERCIAL LITIGATION
- REAL ESTATE, BUSINESS, AND CONSTRUCTION LITIGATION
- REAL ESTATE AND BUSINESS TRANSACTIONS

LAW OFFICES OF JAMES W. BATES,
A PROFESSIONAL CORPORATION

1055 E. COLORADO BLVD, 5TH FLOOR
PASADENA, CA 91126-2327

818-248-1911 VOICE • 818-279-0513 FAX

JBATES@JBATESLAW.COM

WWW.JBATESLAW.COM



www.libertystrongmagazine.com

LIBERTY STRONG



FAMILY STRONG. MILITARY STRONG. AMERICA STRONG.

*“HONORING THOSE
WHO SERVE
& SACRIFICED”*

844-862-3110



RICHARD A. SILL Attorney At Law

- Trusts
- Wills
- Probate
- Conservatorship

(818) 249-2021



Serving the Foothill Community since 1977

LAW OFFICES OF RICHARD A. SILL

RICHARD SILL
2528 HONOLULU AVE
MONTROSE, CA 91020
818.249.2021
RASILL@MSN.COM

LIGHT ON THE CORNER - CHURCH

PASTOR JON KARN
1911 WALTONIA DR
MONTROSE, CA 91020
818.249.4806
LIGHTONTHECORNER.ORG
PASTORJON@LIGHTONTHECORNER.ORG

LINCOLN ELEMENTARY

STEPHEN WILLIAMS
3612 FAIRCHILD ST
LA CRESCENTA, CA 91214
GOLINCOLNLIONS.ORG

LUTHERAN CHURCH IN THE FOOTHILLS

PASTOR SCOTT PETERSON
1700 FOOTHILL BLVD
LA CAÑADA, CA 91011
818.790.1951
LCIFOOHILLS.ORG
OFFICE@LCIFOOHILLS.ORG

M.J.M. MAINTENANCE CO.

RICHARD EISENBERG
336 N CENTRAL AVE • #5
GLENDALE, CA 91203
818.247.9833
MJMJANITOR.COM
MJMJANITOR@ATT.NET

MALEKIAN & ASSOCIATES

ALEN & ARIET MALEKIAN
2255 HONOLULU AVE • STE A1
MONTROSE, CA 91020
818.249.5522
MALEKIAN.COM

MARDO K JEWELRY

MARDO KILADJIAN
2269 HONOLULU AVE
MONTROSE, CA 91020
818.369.7387
MARDOKJEWELRY.COM
MARDOKILADJIAN@GMAIL.COM

MARK MCNELIS & ASSOC CPA'S

MARK MCNELLIS
2550 HONOLULU AVE • STE 207
MONTROSE, CA 91020
818.546.1094
MCNELISCPA.COM
MARKM@MCNELISCPA.COM

History

Grand Central Airport was the departure point for the first commercial west-to-east transcontinental flight flown by Charles Lindbergh.



Lutheran Church in the Foothills

1700 Foothill Blvd
La Cañada Flintridge CA 91011-2921

Sunday Services

Worship & Children's Church 10 AM

818-790-1951

office@lcifoothills.org

www.lcifoothills.org



Evangelical Lutheran
Church in America

God's work. Our hands.

MGM

Mark G. McNelis & Associates CPAs, Inc.

2550 Honolulu Ave, Suite 207 • Montrose, CA 91020

"Knowledgeable, Responsive, Personal Friendly Service"

Office: (818) 546-1094

Fax: (818) 369-7512

WWW.MCNELISCPA.COM

MASSAGE ENVY - LCF

MICHELLE BALL
659 FOOTHILL BLVD
LA CAÑADA, CA 91011
818.952.3689
MASSAGEENVYLCF@AOL.COM
MABALLO9@AOL.COM

MASTER'S TAEKWONDO CENTER

JASON & NARA AHN
2274 HONOLULU AVE
MONTROSE, CA 91020
818.236.3777
MASTERSTKDCUB.COM
NJ0076@HOTMAIL.COM

MERLE NORMAN COSMETICS

KIM KELLY & KRIS KLINE
2341 HONOLULU AVE
MONTROSE, CA 91020
818.249.1743

MONEY BOOKS

MERI TRIANTAFYLIDIS
1100 E BROADWAY • STE 302
GLENDALE, CA 91205
800.538.2340
MONEY-BOOKS.COM/CONTACT

Demographics

According to the 2010 U.S. Census, the population density of La Crescenta-Montrose was 5,717.8 people per square mile.

Dryer Vent Cleaning

Are your towels taking too long to dry?



Air Duct Cleaning

How long has it been since you had your air ducts cleaned?



Call Nancy at 800-358-3828 and schedule your cleaning

Machado Environmental
2219 Broadview Drive, Glendale, CA 91208. Lic.# 719286
Web: www.machadoair.com Email: nancy@machadoair.com

MONTROSE DENTISTRY

ARTIN MANOUKIAN
2307 FLORENCITA AVE
MONTROSE, CA 91020
818.249.1146
MONTROSEDENTISTRYONLINE.COM
AM1074@GMAIL.COM

MONTROSE HEALTHCARE CENTER

ALEXANDRA TELLEZ
2123 VERDUGO BLVD
MONTROSE, CA 91020
818.249.3925
MONTROSEHEALTHCARE.COM
FAC54ADMIN@LONGWOODMGMT.COM

MONTROSE JEWELERS

JOE K
2259 HONOLULU AVE
MONTROSE, CA 91020
818.249.3018
MONTROSEJEWELERS.NET
JOEDIAMONDS@LIVE.COM

MONTROSE PET HOSPITAL

KYM MITCH SURES
2444 HONOLULU AVE
MONTROSE, CA 91020
818.249.2273
MONTROSEPETHOSPITAL.COM
INFO@MONTROSEPETHOSPITAL.COM

**MONTROSE REGENERATIVE
COSMETIC & LASER CENTER**

TERESA / ARMINA GEVORGYAN
2355 HONOLULU AVE • STE 200
MONTROSE, CA 91020
818.514.9959
MONTROSEREGENERATIVECOSMETICS.COM
TMITCH.MONTROSEMEDSPA@GMAIL.COM

**MONTROSE SHOPPING PARK
ASSOCIATION**

PO BOX 782
MONTROSE, CA 91020
818.248.3889
SHOPMONTROSE.COM
MTNROSEGIFTS@AOL.COM

**MONTROSE TOWN KITCHEN
AND GRILL**

JIM COLLINS
2276 HONOLULU AVE
MONTROSE, CA 91020
818.248.1881
TOWNKITCHENANDGRILL.COM
JIM@TOWNKITCHENANDGRILL.COM

MONTROSE TRAVEL

WHITNEY KOBLIN
2349 HONOLULU AVE
MONTROSE, CA 91020
818.553.3200
MONTROSETRAVEL.COM
KMORAD@MONTROSETRAVEL.COM

**MOROVATI WELLNESS
& SPORTS INJURY**

ANTHONY MORVATI
3515 N VERDUGO RD
GLENDALE, CA 91208
818.500.8484
MOROVATI.COM
MOROVATIWELLNESS@YAHOO.COM

MOTIVATE STUDIOS

CEREZA RICHESON
3600 N VERDUGO RD • #106
GLENDALE, CA 91208
818.858.5138
MOTIVATESTUDIOS.COM
CEREZARICHESON@GMAIL.COM

**MOUNTVIEW RETIREMENT
RESIDENCE**

NIKKIANNA DYER
2640 HONOLULU AVE
MONTROSE, CA 91020
818.248.6737
ELMCROFT.COM/COMMUNITY/
MOUNTAINVIEW
SDUBOWITCH@ELMCROFTSENIORLIVING.COM

MUSIC CONNECTION

ERIC BETTELLI
3441 OCEAN VIEW BLVD
GLENDALE, CA 91208
818.995.0101 X102
MUSICCONNECTION.COM
ERICB@MUSICCONNECTION.COM

NETTECHY.COM

HOVIK MOSSESSI
2331 HONOLULU AVE • STE E
MONTROSE, CA 91020
818.233.3860
NETTECHY.COM
INFO@NETTECHY.COM

History

In November 1933, wildfires raged through the nearby San Gabriel mountains above the communities of La Crescenta, La Cañada and Montrose.

NEW MOON

COLIN TOM
2138 VERDUGO BLVD
MONTROSE, CA 91020
818.249.4393
NEWMOONRESTAURANTS.COM

NEW YORK LIFE

CHRIS CHARLES
801 N BRAND BLVD
GLENDALE, CA 91203
818.662.7500
GREATERPASADENA.NYOFFICES.COM
CCHARLES@FT.NEWYORKLIFE.COM

NEXT DOOR CLEANERS

CHAO HAROU TOUINAN
3601 OCEAN VIEW BLVD • UNIT J
GLENDALE, CA 91208
818.248.7944
INFO@NEXTDOORCLEANERS.COM

NORTHSTAR SENIOR LIVING

SUZANNE WOOD
2334 WASHINGTON AVE • STE A
REDDING, CA 96001
530.242.8300
NORTHSTARSENIORLIVING.COM
DROBERTSON@NORTHSTARSL.COM

OCEANVIEW INVESTMENTS GROUP

SCOTT TRULIK
3525 OCEAN VIEW BLVD
GLENDALE, CA 91208
818.236.2920
OVIG.US
SCOTTSHO@HOTMAIL.COM

PANACHE SALON

KAREN GROCHOWICKI
2339 HONOLULU AVE
MONTROSE, CA 91020
818.649.0694
KARENS_HAIR@AOL.COM

PASADENA ASSOCIATION OF REALTORS

RUTH GLEERUP
1070 E GREEN ST • STE 100
PASADENA, CA 91106
818.248.0064
PFAR.ORG

PEPE'S MEXICAN RESTAURANT

RUBY BUGARIN
2272 HONOLULU AVE
MONTROSE, CA 91020
818.248.6622
PEPEMONTROSE.COM
RUBY@MARGARITASMEXICANFOOD.COM

PODLEY PROPERTIES

JANE KANE
846 FOOTHILL BLVD
LA CAÑADA, CA 91011
818.949.1112
PODLEY.COM

Selling Our Valley For Over 25 Years



Jane Kane

Queen of the Foothills

818.632.4128

janekane4re@aol.com

Let's Do This!

846 Foothill Blvd. | La Cañada Flintridge 91011



PODLEY PROPERTIES

KAREN SELLERGREN
846 FOOTHILL BLVD
LA CAÑADA, CA 91011
818.790.1183
KAREN.SELLERGREN@PODLEY.COM

PROFESSIONAL DEVELOPMENT CENTER

KIM HOLLAND / PAM WELDON
2340 HONOLULU AVE
MONTROSE, CA 91020
818.957.0024
PDCOFGCC.COM

PROFESSIONAL MICRO COMPUTER SERVICE

DIANA ROMO
2525 HONOLULU AVE
MONTROSE, CA 91020
818.957.5647
VINEZE.COM

Demographics

The 2010 United States Census reported that La Crescenta-Montrose had a population of 19,653.

PUBLIC ASSIST

ARA TOROSYAN
144 N GLENDALE AVE • STE 333
GLENDALE, CA 91206
818.653.7191
PUBLICASSIST.COM
ARA@PUBLICASSIST.ORG

QUILT 'N THINGS

LANA NORTAN
2411 HONOLULU AVE
MONTROSE, CA 91020
818.957.2287
QUILTNTHTINGS.COM
QNTFIBERARTS@GMAIL.COM

RE/MAX TRI CITY REALTY - GLENDALE

MATHEW MATTI
811 N CENTRAL
GLENDALE, CA 91203
818.409.0040
REMAXTRICITY.COM
MIKE@SIGPM.COM

REAL ESTATE ONE

RICK BARNES
300 W GLENOAKS • #104
GLENDALE, CA 91202
818.802.5191
RICKBARNES.COM
RICK@RICKBARNES.COM

RENTAL CAR MOMMA

DANIEL BATISTA
PO BOX 700607
ST CLOUD, FL 34770
407.396.4152
RENTALCARMOMMA.COM

REST FARMHOUSE INSPIRED

KRISTINA EVANS & THERESA ROSETTE
2420 HONOLULU AVE
MONTROSE, CA 91020
818.369.7040
RESTFARMHOUSEINSPIRED.COM
RESTFARMHOUSEINSPIRED@GMAIL.COM

REVOLUTION DANCE CENTER

JULIE KAY STALLCUP
2287 HONOLULU AVE
MONTROSE, CA 91020
818.249.1100
REVOLUTIONDANCECENTER.COM
CENTIPEX@AOL.COM

RIGHT AT HOME

RENEE & JOE CPNCIALDI
1250 E WALNUT ST • STE 220
PASADENA, CA 91106
626.640.3408
HOMECAREGIVING.ORG
RENEE@HOMECAREGIVING.ORG

ROBBIN'S NEST PRESCHOOL

MICHELLE KURTZ
2912 HONOLULU AVE
LA CRESCENTA, CA 91214
818.248.7324
ROBBINSNESTPRESCHOOL.COM

ROBERT HALL & ASSOCIATES

RONY MAROOTIAN
300 W GLENOAKS BLVD • STE 200
GLENDALE, CA 91202
818.242.4888
ROBERTHALLTAXES.COM
RONY@ROBERTHALLTAXES.COM

ROSSMOYNE, INC.

GEORGE PONDELLA
3500 OCEAN VIEW BLVD
GLENDALE, CA 91208
818.249.8397
ROSSMOYNECONSTRUCTION.COM
LVERDUZCO@ROSSMOYNEINC.COM



In Home Care & Assistance

1250 E. Walnut Street, Suite 220
Pasadena, CA 91106
License #: 194700002
www.rightathome.net

(626) 584-8130

Fax: (626) 584-8132





S.I.G.

*Since
1991*

PROPERTY MANAGEMENT

Sales • Leasing • Management

• Apartments • Homes • Commercial

(818) 249-RENT (7368)

www.SIGrentals.com

sig@sigpm.com / Bonded & Insured / License #01126958

S.I.G. PROPERTY MANAGEMENT

MICHAEL SHAAR

2937 HONOLULU AVE

LA CRESCENTA, CA 91214

818.248.0190

SIGRENTALS.COM

MIKE@SIGPM.COM

SANDRA MULDOON LMFT

SANDRA MULDOON

2233 HONOLULU AVE

MONTROSE, CA 91020

818.370.7902

MONTROSE-COUNSELING.COM

MFTMULDOON@YAHOO.COM

**SADD-VELAZQUEZ-HIGASHI-
SHAMMAA, CPAS**

STEVEN CLEMENT

330 N BRAND BLVD • STE 200

GLENDALE, CA 91203

818.547.5701 X114

INFO@CLEMENTCPA.COM

SCHOLL CANYON ESTATES

RICHARD/LINDA

1551 E CHEVY CHASE DR

GLENDALE, CA 91206

818.951.3830

SENIORLIVINGSTYLE.COM

SCHOLLCANYON@HAWTHORNERET.COM

**SADD-VELAZQUEZ-HIGASHI-
SHAMMAA, CPAS**

MICHAEL & MERCY VELASQUEZ

330 N BRAND BLVD • STE 200

GLENDALE, CA 91203

818.550.8222

SVHSCPAS.COM

Culture

The historic 1946 La Crescenta Motel, formerly known as the May Lane Motel, has been used as a location for numerous feature films and television shows, such as Glee, Criminal Minds, Mad Men and True Blood.

SCHREINER'S FINE SAUSAGES

WALLY SCHREINER
3417 OCEAN VIEW BLVD
GLENDALE, CA 91208
818.244.4735
SCHREINERSFINESAUSAGES.COM
WALLY.SCHREINER@
SCHREINERFINESAUSAGES.COM

SENATOR ANTHONY PORTANTINO

VICKERE MURPHY
1000 NORTH CENTRAL AVE • STE 240
GLENDALE, CA 91202
818.409.0400
SD25.SENATE.CA.GOV
TALIN.MANGIOGLU@SEN.CA.GOV

SHOE FANTASY, INC.

JOSEPH LAHIJANIHA
3701 OCEAN VIEW BLVD
MONTROSE, CA 91020
818.249.4392
SHOEFANTASYSPORTS.COM

SIERRA SIGN IMAGES

TODD OLSON
PO BOX 367
MONTROSE, CA 91021
818.352.9010
SIERRASIGN.COM

SIR MICHAEL'S PARTY RENTAL

MICHAEL NOGUEIRA, JR.
4771 EAGLE ROCK BLVD
EAGLE ROCK, CA 90041
323.225.5466
SIRMICHAELSPARTYRENTALS.COM

SPARR HEIGHTS DISTRICT BUSINESS ASSOCIATION

SCOTT TRULIK
PO BOX 722
MONTROSE, CA 91021
818.236.2920

SPIRITUAL HEART YOGA

KRISTIN HARB
2509 HONOLULU AVE
MONTROSE, CA 91020
818.653.4434
SPIRITUALHEARTYOGA.COM
KRISSY@SPIRITUALHEARTYOGA.COM

SPORT CLIPS

ADMA RALPHS
890 TOWN CENTER DR • UNIT A
LA CAÑADA, CA 91011
818.952.2356
HAIRCUTMENLACANADACA.COM
ASRALPHS@SBCGLOBAL.NET

Culture

Rockhaven Sanitarium on Honolulu Avenue, built entirely of rock, opened in 1923. It became known as the "Screen Actors' Sanitarium," housing such patients as Billie Burke and Gladys Baker, mother of Marilyn Monroe. Closed in 2006, the property was purchased by the City of Glendale in 2008.

STAR CAFE

MANAGER DONALD BILINSKI
2217 HONOLULU AVE
MONTROSE, CA 91020
818.957.7827
STARCAFEMONTROSE.COM

STATE FARM INSURANCE - CHRIS ARISTO

CHRIS ARISTO
2409 HONOLULU AVE • STE 5
MONTROSE, CA 91020
818.448.3939
STATEFARM.COM
CHRIS@ARISTOINSURANCE.COM

Culture

Another, more notorious sanitarium existed in La Crescenta from the 1920s to the early 1960s was the Kimball Sanitarium, which was housed in a large, foreboding, converted Victorian mansion built in the 1880s.

STEAM

JILL GERINGER
2418 HONOLULU AVE • STE L
MONTROSE, CA 91020
818.434.1560
STEAMSPA@YAHOO.COM

STEVEN INGRASSIA AGENCY, INC.

STEVEN INGRASSIA
3535 OCEAN VIEW BLVD
GLENDALE, CA 91208
818.249.6197
STEVENINGRASSIA.COM

STUDIO 4 SALON

MERA DANIELLS
3600 NORTH VERDUGO RD • #102
MONTROSE, CA 91208
818.330.7166
STUDIO4SALON.COM
INFO@STUDIO4SALON.COM

SURFACE FITNESS, INC

SHANNON PONDELLA
3500 OCEANVIEW BLVD
GLENDALE, CA 91208
818.359.1780
SURFACEFITNESSINC.COM
SHANNON@SURFACEFITNESS.COM

TECHITAL, INC.

ALEX PAYNE
144 N GLENDALE AVE • STE 301
GLENDALE, CA 91206
818.649.2600
TECHITAL.COM
ALEX@TECHITAL.COM

THAT'S DARLING!

JUNO KIM
3823 OCEAN VIEW BLVD
MONTROSE, CA 91020
818.330.7700
SHOPTHATSDARLING.COM
SHOPTHATSDARLING@GMAIL.COM

THE ANTIQUE STORE

ROCCO EM
2329 HONOLULU AVE
MONTROSE, CA 91020
818.541.0748
THEANTIQUESTOREWEB.COM

THE CAMPBELL CENTER

SANDY MORENO
6512 SAN FERNANDO RD
GLENDALE, CA 91201
818.242.2434
THECAMPBELL.ORG
SANDY@THECAMPBELL.ORG

THE GATHERING

TERRY & LAURA NEVIN
2712 FOOTHILL BLVD
LA CRESCENTA, CA 91214
818.488.4375
MONTROSECOMMUNITYC.WIXSITE.
COM/THEGATHERING

THE HAPPY PLUNGER

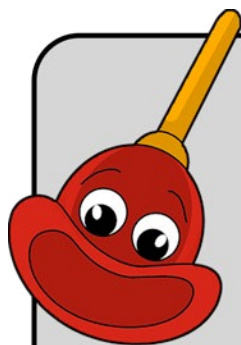
AMIR HATEF
3115 FOOTHILL BLVD • STE M195
LA CRESCENTA, CA 91214
818.633.4051
THEHAPPYPLUNGERPLUMBING.COM
THEHAPPYPLUNGER@GMAIL.COM

THE HUMMINGBIRD CONSERVATORY

TARA MCGRATH
3531 NORTH VERDUGO RD
GLENDALE, CA 91208
310.916.6797
THEHUMMINGBIRDCONSERVATORY.COM
THEHUMMINGBIRD2015@GMAIL.COM

THE INQUIRY ACADEMY

JOSEPH & CAITLIN WONG
3818 OCEAN VIEW BLVD
MONTROSE, CA 91020
818.797.5741
INQUIRYACADEMY.COM
JOSEPHJWONG@ME.COM



License #975854

The
Happy Plunger
Plumbing Services, Inc.

“We specialize in residential and commercial plumbing and are available 24 hours, 7 days a week to help with any plumbing emergency.”

818.633.4051

thehappyplunger@gmail.com
www.thehappyplungerplumbing.com

THE ORTHODONTIC STUDIO

ROZHEH BABAAN, DDS
3600 N VERDUGO RD • #200
GLENDALE, CA 91208
818.542.9800
THEORTHOSTUDIO.COM
INFO@THEORTHOSTUDIO.COM

THE UPS STORE #2686

CHUCK PAP
2029 VERDUGO BLVD
MONTROSE, CA 91020
818.957.3132

THE WINE CAVE

JOSEPH TAHANIAN
2427 HONOLULU AVE
MONTROSE, CA 91020
818.541.6690
WINE-CAVE.COM
THEWINECAVEMONTROSE@YAHOO.COM

THOTSHOP

CAROLYN GMELICH
1365 FOOTHILL BLVD
LA CAÑADA, CA 91011
818.209.9180
THOTSHOPCREATIVES.COM
HELLO@THOTSHOPCREATIVES.COM

TIERRA DEL SOL

CATHY GALARNEAU
9919 SUNLAND BLVD
SUNLAND, CA 91041
818.352.1419
TIERRADELSOL.ORG
CGALARNEAU@TIERRADELSOL.ORG

TILECOUNTERS, INC.

TOM/MICHELLE GONZALES
3518 OCEAN VIEW BLVD
GLENDALE, CA 91208
818.957.7069
TILECOUNTERS.NET
TILECOUNTERS@SBCGLOBAL.NET

TIMEOUT

ASMIRA MKHIRTARYAN
3430 OCEAN VIEW BLVD
GLENDALE, CA 91208
747.255.7171
TIMEOUTPLAY.COM
ASMIRA@TIMEOUTPLAY.COM

TOM'S TOYS

TED FRANKEL
2281 HONOLULU AVE
MONTROSE, CA 91020
818.249.2178
TOMSTOYSTORE.COM

History

On New Year's Eve, 1934, more than 400 homes were destroyed in La Cañada, La Crescenta, Montrose, and Tujunga as hillsides in several mountain locations collapsed sending mudslides into the valley below. Many people were killed, hundreds left homeless, and entire families wiped out.

TROPHY SHOPPE

TRAVIS FELDMAN
3510 OCEAN VIEW BLVD
GLENDALE, CA 91208
818.249.1703
TROPHYSHOPPE@SBCGLOBAL.NET

TWELVE OAKS SENIOR LIVING

DEE ROBERTSON
2820 SYCAMORE AVE
GLENDALE, CA 91208
818.952.1969
DROBERTSON@NORTHSTARSL.COM

UPTOWN FACE & BODY CARE

MARIA PASIO
2418-D & E HONOLULU AVE
MONTROSE, CA 91020
818.248.8829
UPTOWNFACEANDBODY.COM
UPTOWNFACEANDBODY@GMAIL.COM

US STORAGE CENTERS-MONTROSE

ISMAEL JAUREGUI
3708 CLIFTON PL
MONTROSE, CA 91020
818.957.3733
USSTORAGECENTERS.COM
MONTROSE@USSTORAGE.NET

History

Among those killed in the 134 flood were silent-era identical-twin child actors Winston and Weston Doty, aged 19.

USC VERDUGO HILLS HOSPITAL

ELEN BORJA
1812 VERDUGO BLVD
GLENDALE, CA 91208
818.952.2208
USCVHH.ORG
ELEN.BORJA@VHH.USC.EDU

V.O.I.C.E. - GLENDALE/CRESCENTA

MARC STIRDIVANT
PO BOX 273
MONTROSE, CA 91021
818.249.0900
GCVOICE.ORG

V&P TAX AND ACCOUNTING SERVICES

OSCAR A PEDRAJA
2421 MONTROSE AVE • #103
MONTROSE, CA 91020
818.434.4913
OSCAR.VP.TAX@GMAIL.COM

VELVET RHODES PRODUCTIONS

VELVET RHODES
818.247.4509
VELVETRHODESPRODUCTIONS.COM
VELVETRHO@SBCGLOBAL.NET

WALK THIS WAY SHOES

EDNA BAGHOUMIAN
2253 HONOLULU AVE
MONTROSE, CA 91020
818.248.7206
WALKTHISWAYSHOESCA.COM
EBPOSTS@GMAIL.COM

WELLNESS CENTER

DR. BRIAN MILLER
2235 HONOLULU AVE • STE A
MONTROSE, CA 91020
818.249.2300
MONTROSEWELLNESSCENTER.COM
DR-BRIAN@SBCGLOBAL.NET

WELLS FARGO BANK - LA CRESCENTA

ROMINA ALADADYAN
3200 FOOTHILL BLVD
LA CRESCENTA, CA 91214
818.330.1856
WELLSFARGO.COM
ROMINA.ALADADYAN@WELLSFARGO.COM

WELLS FARGO BANK - MONTROSE

REGINA DEL ROSARIO
2434 HONOLULU AVE
MONTROSE, CA 91020
818.249.6146
WELLSFARGO.COM
MARIA.R.DELROSARIO@WELLSFARGO.COM

WORLDWIDE FAMILY ASSOCIATES

ROCIO AVILA
17057 BELLFLOWER BLVD • STE 202
BELLFLOWER, CA 90706
818.317.3395
WORLDWIDEFAMILYASSOCIATES.COM
IPREPLANNED@GMAIL.COM

YMCA OF THE FOOTHILLS

DAMON COLALUCA
1930 FOOTHILL BLVD
LA CAÑADA, CA 91011
818.790.0123
YMCAFOOTHILLS.ORG
DCOLALUCA@YMCAFOOTHILLS.ORG

YOGA ROCK STUDIOS

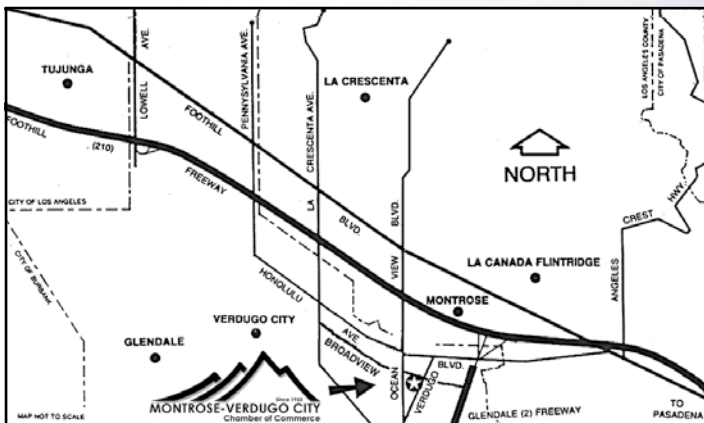
NICOLE MERCOLINO
PO BOX 712
MONTROSE, CA 91012
323.807.2559
YOGAROCKSTUDIOS.COM
YOGAROCKSTUDIOS@GMAIL.COM

INDIVIDUAL MEMBERS

ELAINE ALEXANDER
JOE ALLEN
GLORIA BEYER ATF
HENRY/YOLANDA CHAVEZ
DOTTIE ECKER
HARRIET HAMMONS
THOMAS & NICOLE HINZ
RUBEN D KARAPETIAN
JOE KROENING
JACQUELINE MARASHLIAN
TRISH MCRAE
ROBERTA MEDFORD
LEN AND BRENDA PERONI
MIKE PERRY
RUTH PIERCE
ROBERT THOMPSON
FRANK V. VIRGALLITO
JANA ACE WUNDERLICH
RITA ZOBAYAN

- AREA & LOCATION:** Fifteen miles north of Los Angeles Civic Center and seven miles north of Downtown Glendale; eight miles west of Pasadena; six miles south of Angeles Crest National Forest.
- ALTITUDE:** Developed area has an altitude of 1100 feet to 2150 feet
- CLIMATE:** Temperatures range from 38 to 61 degrees during December and January, and from 69 to 95 degrees during July and August on an average. Rainfall averages 23.8 inches per year.
- FREEWAY ACCESS:** Foothill/Pasadena 210 Fwy; Glendale State 2 Fwy; Golden State 5 Fwy.
- LOCAL ATTRACTIONS:** Montrose Shopping Park, Le Mesnager Barn, Descanso Gardens, Vietnam War Memorial, Angeles National Forest.
- MAJOR EVENTS:** Annual Art Walks, Oktoberfest, Glendale-Montrose Christmas Parade, Arts & Craft Festival, Car Show, Annual Golf Tournament & Scholarship Fundraiser, Old Towne Christmas, Weekly Harvest Market & Marketplace.
- POPULATION:** La Crescenta, Montrose and Verdugo City 45,303; La Cañada Flintridge 20,662.
- TRANSPORTATION:** **AIR:** Burbank-Glendale-Pasadena Airport, a municipally owned and operated facility; 20 miles. Los Angeles Airport, 1 hour away.
BUS: Metro Transit Authority (MTA)
- ZIP CODES:** Montrose 91020, Verdugo City 91046, Glendale 91208, La Crescenta 91214, La Cañada 91011

**The Montrose-Verdugo City Chamber of Commerce
Invites you to become a member.
Contact the Chamber of Commerce Office at
(818) 249-7171 for information.
*Your Business is Our Business!***





BUSINESS MIXERS: Bi-monthly Business Mixers at various local businesses allowing for networking with other local business owners as well as community members.

JANUARY 25, 2018:

Annual Community "Walk the Red Carpet" Recognition Dinner
The Montrose-Verdugo City Chamber of Commerce's Annual Installation & Awards Dinner celebrates and recognizes local community members and organizations by highlighting their achievements, contributions and participation within the North Glendale/Foothills Area.

Oakmont Country Club
3100 Country Club Dr
Glendale, CA 91208

MARCH 18, 2018:

Annual Day at the Races

Held in March at the Santa Anita Race Track, Day at the Races is co-sponsored with the Crescenta Valley Sheriff's Support Group, the Crescenta Valley Chamber of Commerce and Volunteers. The package includes nine races, parking, official program, BBQ lunch, soft drinks and a silent auction. Funds help support the Crescenta Valley Sheriff's Support Group.

APRIL 8, 2018:

4th Annual Montrose Food and Brewfest

A craft microbrew tasting event paired with free food samples from local Montrose restaurants.

2200 Block of Honolulu Ave
Montrose, CA 91020



MAY 28, 2018

Memorial Day Service

Vietnam War Memorial
Corner of Ocean View and Honolulu
Montrose, CA 91020

AUGUST 25, 2018

1st Annual Glendale on Tap

A craft microbrew tasting event paired with free food samples from local Glendale restaurants.

Glendale, CA

SEPTEMBER 12, 2018

18th Annual Foothills Business Expo

USC Verdugo Hills Hospital
4th Floor Community Rooms
1812 Verdugo Blvd
Glendale, CA 91208



OCTOBER 6, 2018

41st Annual Oktoberfest

2200, 2300, 2400 Blocks of Honolulu Ave
Montrose, CA 91020

DECEMBER 1, 2018

42nd Annual Montrose Christmas Parade

2200, 2300, 2400 Blocks
of Honolulu Ave
Montrose, CA 91020 ❖





- Serving all major insurance companies
- Experienced estimators
- High quality workmanship

General Contractors & Emergency Service Providers Since 1986




Water/Flood




Fire/Smoke



Wind

 www.rossmoynainc.com

 gpondella@rossmoynainc.com

 818.249.8397
800.847.0452



Choices
Unlimited Inc.

818-248-8802

TILE • CABINETS • COUNTER TOPS • FLOORING

INSTALLATION AVAILABLE

FREE ESTIMATES

GENERAL CONTRACTOR LICENSED AND BONDED

2100 VERDUGO BLVD | MONTROSE CA 91020 | 818 248 8803 FAX